



# hooked on HEREFORDS

THE BI-MONTHLY NEWSLETTER OF THE NEW ZEALAND HEREFORD ASSOCIATION



## Dairy/Beef Progeny



70% of calves in the B+LNZ Genetics Dairy Beef Progeny Test at Limestone Downs have been born with considerable ease, with only 2% of cows and 7% of heifers requiring assistance. PhD student Lucy Coleman has been hard at work weighing and DNA sampling each calf on arrival. The shed is now full of fantastic looking calves and we look forward to receiving the analysis closer to the end of the year, quantifying the value that genetics play to commercial operations and demonstrating the use of genetic tools such as EBVs and Indexes.

NZHA would like to thank all the breeders who have nominated bulls for the 2016 mating season for the Beef Progeny and Dairy Beef Progeny tests. With the closing date for sire nominations over, the progeny test committees will meet shortly to determine the most suitable sires.

### DIARY DATES 2016

- 26th September  
copy due for October newsletter
- 19th - 21st October  
Royal Show, Hawkes Bay, NZ Hereford Feature Breed
- 31st October - 1st November  
NZHA Council Meeting
- 9th - 11th November  
Canterbury show
- 2017**
- 12th - 16th May  
Beef Expo

### CONTENTS

- 2 NZHA President's Note
- 3 Hereford Prime NZ
- 4 Council Communications
- 6 2016 NZHA Fellowship recipient
- 6 B+LNZ Farm Safety Management System Workshops
- 7 Tru-Test EID stick reader
- 9 NZHA Completeness of Performance 2016
- 11 Managing Genetic Conditions





# President's Note

Commencing on the 1st August Posy Moody took over the role as general manager NZHA. Many of you will already know Posy, either from her years as Beef Expo Events Manager or from her contract role with NZHA as Events and Communications Manager, where she successfully put together the pitch for NZHA to become the next host to the WHC. Posy lives with her two children and husband, Chris, and a few heifers and horses at a small block in Kiwitea. Posy counts herself as a New Zealander now she has been in Manawatu for 16 years, however she grew up in Scotland on a cattle stud and spent a lot of her childhood at A & P's and bull sales, as her father was a well-known and respected international judge, breeder and secretary of the Angus Society. After graduating from St Andrews University, she attended the Royal Military Academy Sandhurst and spent 5 years as an officer, commanding troops in Germany and Bosnia. Following the army she pursued her agricultural associated event career in London, Australia and finally NZ. Posy recently attended the Royal Highland Show in Edinburgh prior to employment with NZHA, where she used her Scottish contacts to promote the World Hereford Conference in 2020. She was thrilled to see the British Herefords on a comeback amongst the other native breeds by winning the Inter-breed team as well as the overall individual Inter-breed Championship at the Royal Highland and the Royal Welsh.

On behalf of all NZHA members we recognise the efforts Donna Abbiss made to the association, her professionalism, diligence,

and editorial skill has served NZHA well, and we wish Donna well in her future endeavours, and a chance to enjoy her family and business a little more.

Also note is resignation of Linda Shailer who was employed by PBBNZ as Hereford registrar. NZHA recognised the outstanding skills and service Linda brought to her role as Hereford Registrar with a small token of your appreciation of 14 years of service. Megan Ellett now takes over Linda's role as a PBBNZ employee working as the Hereford Registrar and as most of you know Megan, her drive and personality will see the same levels of service delivered.

With calving underway or due to commence shortly you still have an opportunity to purchase your H tags solely through PBBNZ, as a marked point of difference to highlight a registered purebred animal in the market place by contacting Patrice at tags@pbbnz.com

Please feel free to communicate with your council at any time on matters which are important to you. Council has no hidden agendas or secrets and is keen to discuss openly with all members, outcomes and strategies, to drive Herefords, to the fore in NZ, in a vibrant, sustainable way.

*Kind regards,*  
Phil Barnett,  
President, NZHA

## Registry Report

### Completeness of Performance

By now you will have all received your 2016 Herd Reports (if not please let me know ASAP). Please note that COP report data is shown against the year the animal was born NOT the year the data was collected e.g. scanning.

### ADLS Online

ABRI have now finished testing to give Hereford breeders the ability to complete their ADLS online. For all of those breeders who record electronically, this option will be available when completing your 2017 ADL (February 2017). More information will follow closer to the time to assist you with this transition.

### Transfers

Prior to completing transfers for animals sold, please ensure they

have had the required DNA tests done (in line with NZHA rules). DNA testing is available through the PBBNZ office, please contact us for more information.

### The requirements are:

Males – DNA profile, sire verification, Hypotrichosis tested and declared free

Females – DNA profile, sire verification, Hypotrichosis tested and declared (*dispensation granted for the requirement to sire verify females 3 years and older*).

That's my first Registry Report complete! I am really enjoying my new role and working with you all again, and would like to thank everyone for being so understanding while I get up to speed.

Kind regards,  
Megan Ellett, Registry



## Rabobank showcases Hereford Prime at National Fieldays

The Hereford Prime Paddock to Plate concept that has been rolled out around New Zealand was taken up a notch when leading rural bank Rabobank invited the quality branded beef programme to be part of its Paddock to Plate Showcase at the National Fieldays at Mystery Creek.

Hereford Prime NZ extends its appreciation to all the breeders that volunteered their help throughout the four day event which exposed HP to thousands of new people – both potential consumers and potential suppliers in the form of commercial farmers. Special thanks to Gemma Dorotich from Gembroke Stud and NZHA's Trans-Tasman ambassador who worked tirelessly and passionately for the entire event representing the brand and breed. More details on the event and a video clip produced by Rabobank can be found on our website - [www.herefordprime.co.nz](http://www.herefordprime.co.nz)



Rabobank



Thousands of Rabobank clients and invited guests sampled Hereford Prime products at the bank's Paddock to Plate Showcase at the National Fieldays.



Jane McDonald from Kairuru Herefords shares the story of Hereford Prime and Magjills award winning Slow Cooked Pulled Hereford Beef.



NZHA Trans-Tasman Hereford Ambassadors Gemma Dorotich, left of Gembroke Stud and Pip Robinson of the Kokonga Stud both volunteered to help out during the Paddock to Plate showcase representation the brand and breed.



Gemma Dorotich, left and Jane McDonald about to offer samples of Magjills award winning Slow Cooked Pulled Hereford Beef to Rabobank marquee visitors.



Peter McCormick, left from Rock-End Herefords chats with NZHA President Phil Barnett of Kaitoa Herefords at Rabobank's Paddock to Plate Showcase.



Hereford Prime director Colin Corney demonstrates how to use a HP steak branding iron at the National Fieldays.

**NZHA/HP**

NZHA and HP boards met in Auckland airport (rather less luxurious than it sounds) meeting room on Thursday 4th August to discuss Hereford Prime. The aim of the meeting was to provide unity and clarity giving each board direction over the future of HP. Both boards agreed it was a highly valuable day and should be repeated as an annual event. Funding options were discussed with NZHA agreeing to continue their financial support of HP and HP agreed there was an additional need to find some external funding. From several working sessions throughout the day, NZHA determined their responsibility to HP is from the breeder to the processor, including the finishers, while HP's continued responsibility is for the processor to the end consumer. As a result of the meeting clear outcomes were discussed with both boards being held accountable. President from both boards are working on a joint communication to the breeders regarding the meeting, which will be emailed to you shortly.

**Donna Abbiss**

Donna wanted no fuss on her departure from NZHA (having previously had a formal presentation from the Association after her first 'stint' in the role), however given that she had committed over a decade of time and energy devoted to the Association we couldn't see her leave without a small presentation during an informal morning tea. We are grateful to her busy husband Mike and three sons who spared her from the farm for so long!



**Registry**

If you have previously requested an EBV herd report but have not yet received one, this may be due to change in staff. From now on please contact Megan directly requesting a hard copy of your EBV report DDI: 06 323 0747 or email her on [megan@pbbnz.com](mailto:megan@pbbnz.com) OR download one from the downloads area on Internet Solutions following the monthly group runs. It is a valuable tool for benchmarking/monitoring and improving your herd performance, so don't hesitate to call the office if you need assistance.

**Beef Expo**

Tru-Test Beef Expo 2016 not only was a successful event for NZHA but also was ended up making a marginal profit. There were lessons to be learnt from this year's Beef Expo but the Beef Expo executive are hopeful that 2017 will be as every bit successful.

Date for your 2017 diary – Beef Expo 2017 12-16th May. Be mindful that for Beef Expo 2017 all Hereford entries will require full parent verification. If you require dam verification don't forget Megan has DNA envelopes for hair samples which she can pre-print with your contact details as well as animal prefix and breed, to speed up the process.

**NZHA 2017 Magazine**

After positive member feedback regarding high standard of the NZHA 2016 magazine, Pivot will once again design the magazine and breed adverts. NZHA are currently in discussion with potential editors.

If you have any stories or photographs which you wish to be considered for the 2017 magazine, please contact the NZHA office at [office@herefords.co.nz](mailto:office@herefords.co.nz)

**WHC 2020**

It was decided at the last Council meeting in May that in

**Newcastle Herefords**

*Annual Yearling Bull Sale*

**Wednesday 21st September**

Frankton Saleyards, Hamilton - 12.30pm | 17 Selected 15 month Bulls

**VIEW  
CATALOGUE  
ONLINE**

**LOT 1** **NEWCASTLE KAURI 505**  
BORN: 06/06/2015 ID: 1188150505

JULY 2016 HEREFORD GROUP BREEDPLAN							
DIR	DTRS	GL	BIRTH	200	400	600	MCW
-1.2	+3.5	+0.1	+6.0	+39	+68	+101	+99
41%	36%	54%	71%	65%	65%	64%	58%
MILK	SS	CAR	EMA	RIB	RUMP	RBV	IMF
+27	+2.8	+68	+3.9	+0.0	+0.0	+1.6	+0.0
46%	76%	54%	48%	52%	56%	50%	48%

**LOT 2** **NEWCASTLE KIPLING 522**  
BORN: 29/06/2015 ID: 1188150522

JULY 2016 HEREFORD GROUP BREEDPLAN							
DIR	DTRS	GL	BIRTH	200	400	600	MCW
+0.5	+2.0	-0.4	+5.6	+39	+70	+101	+99
38%	32%	47%	70%	65%	65%	64%	58%
MILK	SS	CAR	EMA	RIB	RUMP	RBV	IMF
+25	+2.5	+67	+3.8	+0.5	+0.5	+1.0	+0.4
46%	46%	53%	46%	49%	53%	47%	45%

Noel & Betsy Smith, 394 Ngaruawahia Rd, RD 8, Hamilton 3288. P: 07 824 8300 . M: 0275 943 895

the short term the current NZHA council will be the 2020 WHC council, however if you would be interested in getting involved early, on one of the WHC sub committees, such as the pre and post tours, sponsorship or conference, please contact Posy on [manager@herefords.co.nz](mailto:manager@herefords.co.nz) There will be ample opportunity to become involved further down the path for all members.

### NZHA Herd Tour:

Taranaki Club is hosting 2017 Hereford Herd Tour from Sunday 19th March – Wednesday 22 March.

## Royal Show

### 19th – 21st October

– Feature Breed NZ Herefords

**This year NZHA have accepted the offer to be feature breed at the Royal Show, located at Hastings.**

CATTLE ARENA PROGRAMME:

**Wednesday 19th October**

**Thursday 20th October** – Beef Cattle Breed Classes and Interbreed Classes. Meat and Wool Cup – 3.30pm  
Stockman's BBQ

**Friday 21st October** – All Breeds Classes

We encourage members to support this venture by either entering classes or being on site to assist in promoting the breed and HP. The schedule can be found on line: [www.showgroundshb.co.nz](http://www.showgroundshb.co.nz) Please contact Posy at [manager@herefords.co.nz](mailto:manager@herefords.co.nz) if you would like to offer your assistance in manning the trade site or being involved.

### Judges Appointments 2016

Senior Hereford Judge: Michael Bayly

Associate Judge: Fiona Curtis

#### Canterbury Show – November 2016

Senior Hereford Judge: Richard Martin

Associate Judge: Mark Murphy

## Obituary –

Jenny McKenzie

NZHA wishes to extend it's deepest sympathy and condolences to the McKenzie family of the Mangahina stud in the passing of Jenny McKenzie.

Her warm personality and outstanding hospitality was extended to many NZHA members and added to the mana of Mangahina.

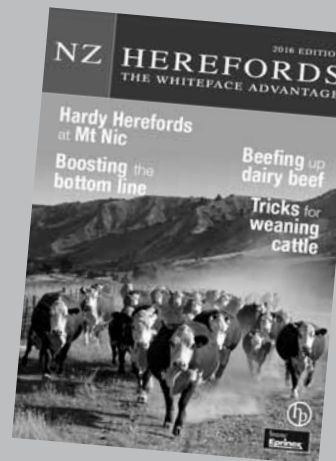


Do you have the next cover shot?

High resolution Hereford pics are needed for the 2017 Hereford Magazine and other Hereford marketing.

If you think you have the best shots depicting Herefords please email them to:

[office@herefords.co.nz](mailto:office@herefords.co.nz)



## B+LNZ FARM FACTS 2016

The 2016 Compendium of New Zealand FARM FACTS 40th Edition has been released by Beef + Lamb New Zealand the girls in the office always find it a great read and have enclosed it with the August newsletter for your reference.

### Interesting Facts on the Dairy Beef Market

- The demand for dairy beef calves in the saleyards will not be met from the calving underway (NZ Farmers Weekly)
- The size of the average dairy milking herd fell from 419 in 2014 to 405 in 2015 - first ever recorded drop - herd shrinkage was reflected in cull cow numbers
- Annual cow kill was 85% dairy and 15% beef
- Beef cattle numbers fell by 1mill in 2015 as more drystock farmers turned to dairy grazers - expected that the trend will reverse
- B+LNZ estimated that 500,000 calves transfer from dairy to beef farms each year and were mostly grown out to slaughter bulls within two years
- High percentage of male calves born on beef farms were steered
- 30% annual heifer kill was contributed by dairy sector
- Anecdotally, northern dairy farmers use less expensive semen last mating and put lower quality cows to beef bulls or beef semen

# 2016 NZHA Fellowship recipient

Citation by Sid Hain

MALCOLM McCONOCHIE, LAKE STATION

Malcolm became an NZHA Councillor in 1992 alongside Laurie Paterson and Richard Barnett. The three men were the NZHA representatives that forged the partnership with other beef breeds to form PBBNZ, Performance Beef Breeders NZ Ltd, to give beef breeder's greater foresight and standing in the industry. Malcolm was then elected to the PBBNZ board in 2000, followed by a term as president of the New Zealand Hereford Association 2002-2004 and from 2004 – 2008, he chaired the PBBNZ Board of Directors.

During his PBBNZ term he managed the shareholding process in 2005 and in 2007. Malcolm chaired the strategic planning that was instrumental in PBBNZ moving into a purpose built facility in South Street, Feilding. In 2008, Malcolm finished his term as Chairman of the PBBNZ Board and retired from the board in 2009.

Finding he had too much spare time, in 2009 Malcolm accepted the position of Chairman of the South Island Sheep and Beef Council for a number of years.

Fellowship presenter, Sid Hain quoted the maxim, that "leadership was a team sport". However leadership can only be a team sport when everyone is inclusive and not obtrusive. Malcolm has the ability to show great courtesy and make people feel welcome and "included" even when the ice he was standing on was extremely tenuous.

Sid went on to comment that Malcolm was a great talker and



Malcolm McConochie, Lake Station, awarded an NZHA Fellowship award. (pictured with wife Ingrid)

both he and Sid discussed many topics and issues into the wee small hours of the morning. In the winter months, this was a rather cold experience!

Malcolm's wife, Ingrid was also acknowledged in the presentation having been very much part of Malcolm's ability to take on directorships. Not only keeping the home fires burning, feeding out, checking calving cows and doing all the other farm jobs whilst Malcolm was away but also the many discussions shared round the kitchen table, trying to bring a greater resolve to several thorny issues.

A very dear friend of Malcolm's and former chairman of PBBNZ, the late Craig Martin shared with him many of those problems and I know he will be looking down now and saying "well done mate – you really deserve this NZHA fellowship".

Malcolm, you are to be congratulated on your 2016 NZ Hereford Association fellowship. Thank you for your wonderful leadership.

## B+LNZ Farm Safety Management Systems Workshops

B+LNZ are rolling out a series of Work Safe NZ endorsed, Farm Safety Management System workshops throughout the country. Dates in your region can be found via the Beef+Lamb e-newsletter – sent to you via email OR by following this link <http://www.beeflambnz.com/farm/farm-safety/>

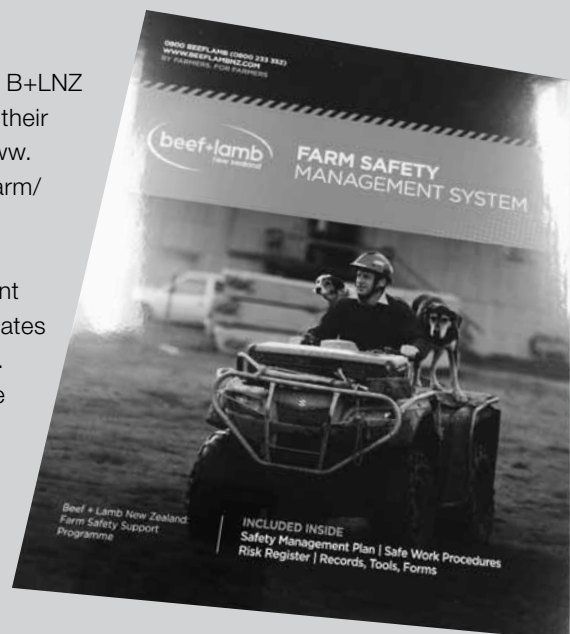
Funded by farmer levies, the workshop is specifically designed for NZ sheep and beef farmers.

At the workshop attendees are given a free comprehensive and 'user friendly' Farm Safety Management System manual which includes all templates and registers required for compliance.

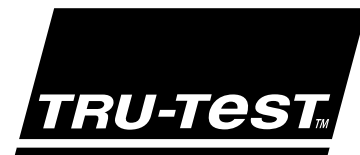
The System has been developed by safety partners QSI (NZ) Ltd and in conjunction with Work Safe NZ. Regional Work Safe representatives are in attendance at the workshops, enabling question and answer sessions to occur ensuring information received meets the requirements of the regulator.

Also check out the B+LNZ farm safety link on their website - <http://www.beeflambnz.com/farm/farm-safety/>

Resources around people management and legislation updates are on the website. Additional template and register forms can be sourced on the website and downloaded or edited online.



# New generation Tru-Test EID stick reader brings portable data collection to farmers



Tru-Test has announced the launch of its next generation EID stick readers. The XRS2 and SRS2 build on the success of New Zealand farmer's favourite EID reader, the XRS widely regarded as having set the standard for measurement accuracy and ease of use in EID stick readers. True to this form, the next generation makes set-up, connection, recording and transferring of information easier still.

Tru-Test Product Manager Steven Whitaker says the changes reflect the rapid advances in the 'intuitiveness' of information technology more generally.

"The XRS was conceived almost eight years ago and launched in 2011. The changes we have made since then are evolutionary, built on a particularly strong foundation".

The main advances are in ease of capturing, editing and viewing information, thanks to bigger daylight viewable screen with larger fonts and simpler navigation with quick access keys.

The XRS2 has an alphanumeric keypad for fast entry of information such as condition scores or breed and can capture up to 15 fields of information for each individual animal. Entering and or editing visual tags, typing in notes, editing session

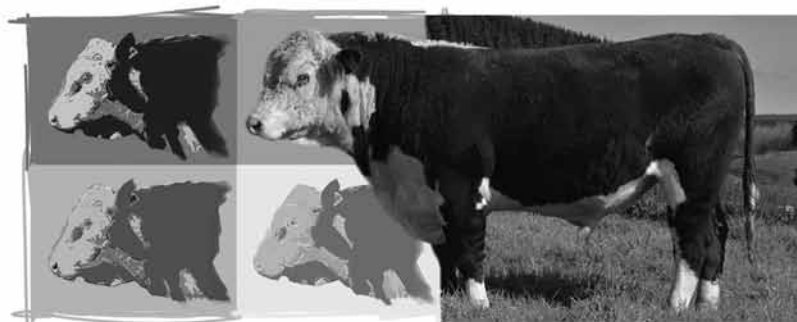
information and reopening a session to add more animals is easy.

Craig Foote from Breedtech Hawkes Bay, notes that "the XRS 2 has all the great attributes of the old stick reader. It's still rugged and reliable and reads EID tags at a speed second to none, but now I can add a whole bunch of customisable data as well, on the go".

Whitaker says one of the most important attributes of the XRS2 and SRS2 is durability. "This technology needs to have the sophistication of a mobile phone yet be rugged for the harsh farming environment. It also needs to allow the user to be durable – to operate for long hours without stress or fatigue.

The XRS2 is designed to help farmers capture and manage individual animal data while the SRS2 is for farmers who want to read tags but not necessarily capture other data beyond EID tags on the stick reader.

The XRS2 and SRS2 are part of the integrated range of Tru-Test solutions for tracking, weighing and measuring animal performance.



**2016 Yearling Bull Sale 12.30pm Wednesday 14 September, Frankton Sale Yards. 45 yearling bulls on offer.**

Kokonga East Rd Waikaretu Valley  
Tuakau RD5  
Pip Robinson 09 233 3020  
Bruce Robinson 0274 983 530  
**kokonga.co.nz**





PBBNZ is pleased to announce the appointment of our new Tag Expert!

It is with pleasure we welcome Patrice Grant to the PBBNZ team, into the role of Tag Sales and Administration. Patrice comes to us following 2 years as Project Manager at Ag Hub and is looking forward to continuing her involvement in the NZ agricultural industry. Patrice will be available to take your tag orders and enquiries between 8.30am-5pm, Monday to Friday.

Email: [tags@pbbnz.com](mailto:tags@pbbnz.com) | Phone DDI 06 323 0861

# True Blue HEREFORD 'H' TAGS



- Identifying registered, performance recorded Hereford cattle.
- Tag package includes NAIT + visual tag sets.
- Blue male (back) tag denotes Hereford 'H', various colour options available for female (front) tag.

**Competitive pricing – Choice of tag brand – Exclusive to registered Hereford breeders**

For more information please contact: NZHA office or order now with the tag experts at PBBNZ phone 06 323 4484 or email [tags@pbbnz.com](mailto:tags@pbbnz.com)

[www.pbbnz.com](http://www.pbbnz.com)



Taranaki Hereford Club

## NEW ZEALAND HEREFORD HERD TOUR TARANAKI 2017

Sunday 19th March  
to  
Wednesday 22nd March

*"It's all go"*

ITINERARY IN NEXT BULLETIN

## ORARI GORGE HEREFORDS Semen for Sale Orari Gorge Mischief 120083

Mischief is in the top 1% for NZHA selection indexes as well as having great body, constitution and feet. He is out of one of Orari Gorge's best cow who has also produced another stud sire Orari Gorge Napier 130133. His grand dam Nithdale 070064 is still active in the herd and is the mother of Orari Gorge Oligarch 140025 that we have retained for the stud this year.

### JULY 2016 HEREFORD GROUP BREEDPLAN

DIR	DTRS	GL	BIRTH	200	400	600	MCW
+6.1	+2.0	-0.4	+3.2	+36	+71	+99	+73
58%	43%	65%	91%	87%	85%	86%	76%
MILK	SS	CAR	EMA	RIB	RUMP	RBV	IMF
+19	+3.4	+67	+3.2	+1.7	+2.3	+0.1	+1.1
62%	87%	73%	61%	66%	71%	64%	68%

Orari Gorge Mischief's first crop of calves, all from first calving heifers, sold well at this year's sale with all those offered, selling and averaging above the whole sale average.

Mischief is currently at Xcell Breeding Services with semen being collected for an export order to Australia. Orari Gorge Mischief 120083 was selected as a 2015 mating sire for the BLG – NZHA beef progeny test at Mendip Hills.

Contact – **Robert Peacock**  
ph 03 692 28 93 or  
[robert@orarigorge.co.nz](mailto:robert@orarigorge.co.nz)

**Price of semen  
- \$50 per straw**



# NZ Hereford Association Completeness of Performance 2016

The following statistical data has been extracted from a “Completeness of Performance” report produced for the NZ Hereford breed. It provides a summary of the information that NZHA seedstock herds have submitted to BREEDPLAN, with a range of statistics tabled ie details of the pedigree, weight, carcass, birth and fertility information that has been recorded.

## ALL HERDS Completeness of Performance Animal Details

Calving Year	Animals	Sex			DOB		Sire Details				Dam Details			Mating Type			Recipient Dam	
		Male	Female	Ratio	No.	%	Unique	Mult	Generic	%	Unique	Generic	%	Natural	AI	ET	No.	%
2002	13488	6644	6844	0.97	13478	100%	13414	0	0	99%	13455	0	100%	11656	1559	273	170	62%
2003	13587	6836	6751	1.01	13572	100%	13465	0	0	99%	13544	0	100%	11864	1518	205	151	74%
2004	13504	6656	6848	0.97	13474	100%	13392	0	0	99%	13456	0	100%	11710	1565	229	185	81%
2005	14143	7115	7028	1.01	14139	100%	14090	0	0	100%	14132	0	100%	12240	1637	266	237	89%
2006	14426	7259	7167	1.01	14426	100%	14386	0	0	100%	14413	0	100%	12669	1510	247	223	90%
2007	14304	7123	7181	0.99	14304	100%	14233	0	0	100%	14292	0	100%	12516	1642	146	114	78%
2008	13377	6693	6684	1.00	13376	100%	13342	0	0	100%	13369	0	100%	11865	1356	156	120	77%
2009	13755	6849	6906	0.99	13755	100%	13703	0	0	100%	13754	0	100%	12295	1405	55	39	71%
2010	13550	6757	6793	0.99	13550	100%	13508	0	0	100%	13544	0	100%	12216	1304	30	23	77%
2011	12856	6429	6427	1.00	12856	100%	12825	0	0	100%	12850	0	100%	11718	1113	25	21	84%
2012	13483	6680	6803	0.98	13483	100%	13452	0	0	100%	13475	0	100%	12063	1389	31	21	68%
2013	13493	6858	6635	1.03	13491	100%	13387	0	0	99%	13477	0	100%	12094	1361	38	20	53%
2014	13800	6915	6885	1.00	13796	100%	13702	0	0	99%	13793	0	100%	12371	1380	49	21	43%
2015	13449	6788	6661	1.02	13449	100%	13401	0	0	100%	13426	0	100%	12478	944	27	20	74%
2016	81	35	46	0.76	81	100%	81	0	0	100%	81	0	100%	78	3	0	0	-

## ALL HERDS Completeness of Performance Birth and Fertility

Calving Year	Sex	Animals	Calving Ease		Birth Weight		AI Date		Scrotal Size		Days to Calving	
			No.	%	No.	%	No.	%	No.	%	No.	%
2002	F	6844	5001	73%	4581	67%	694	87%			6659	50%
2002	M	6644	4899	74%	4635	70%	654	86%	1149	17%		
2003	F	6751	4788	71%	4675	69%	629	87%			6983	52%
2003	M	6836	4877	71%	4852	71%	714	90%	1511	22%		
2004	F	6848	5468	80%	4985	73%	629	83%			6098	46%
2004	M	6656	5334	80%	5108	77%	728	90%	1637	25%		
2005	F	7028	5650	80%	5485	78%	749	95%			6724	48%
2005	M	7115	5692	80%	5558	78%	801	94%	1833	26%		
2006	F	7167	6097	85%	5457	76%	668	91%			7146	50%
2006	M	7259	6202	85%	5671	78%	720	93%	1868	26%		
2007	F	7181	6084	85%	5755	80%	779	96%			7245	51%
2007	M	7123	5969	84%	5753	81%	792	95%	2012	28%		
2008	F	6684	5769	86%	5389	81%	612	93%			7220	55%
2008	M	6693	5871	88%	5429	81%	665	95%	1837	27%		
2009	F	6906	6107	88%	5639	82%	665	94%			6664	49%
2009	M	6849	6063	89%	5657	83%	645	93%	1844	27%		
2010	F	6793	6095	90%	5674	84%	598	94%			3952	29%
2010	M	6757	6040	89%	5718	85%	631	94%	1863	28%		
2011	F	6427	5762	90%	5411	84%	526	91%			969	8%
2011	M	6429	5737	89%	5388	84%	489	91%	1698	26%		
2012	F	6803	6340	93%	5767	85%	644	93%			873	6%
2012	M	6680	6253	94%	5624	84%	638	92%	1899	28%		
2013	F	6635	6277	95%	5809	88%	603	95%			827	6%
2013	M	6858	6444	94%	6062	88%	701	97%	2059	30%		
2014	F	6885	6466	94%	6121	89%	638	94%			893	6%
2014	M	6915	6506	94%	6130	89%	681	97%	1887	27%		
2015	F	6661	6206	93%	5907	89%	457	99%			88	1%
2015	M	6788	6315	93%	5983	88%	475	99%	61	1%		
2016	F	46	42	91%	30	65%	2	100%			0	0%
2016	M	35	33	94%	31	89%	1	100%	0	0%		

**ALL HERDS  
Completeness of Performance  
Weight**

Calving Year	Sex	Animals	200 Day Wt			400 Day Wt			600 Day Wt			Mature Cow Weight	
			1st	2nd	%	1st	2nd	%	1st	2nd	%	No.	%
2002	F	6844	5345	455	78%	3612	373	53%	2323	89	34%		
2002	M	6644	5254	459	79%	3737	783	56%	2149	242	32%		
2003	F	6751	5506	294	82%	3331	475	49%	1828	109	27%	251	2%
2003	M	6836	5678	285	83%	3965	682	58%	1881	161	28%		
2004	F	6848	5248	131	77%	3751	529	55%	2487	50	36%	931	7%
2004	M	6656	5321	247	80%	3982	999	60%	2039	101	31%		
2005	F	7028	5406	194	77%	3887	460	55%	2405	70	34%	2662	19%
2005	M	7115	5680	254	80%	4208	704	59%	2132	159	30%		
2006	F	7167	5654	207	79%	3489	445	49%	2179	113	30%	2962	21%
2006	M	7259	5808	356	80%	4147	588	57%	1879	138	26%		
2007	F	7181	5533	269	77%	3735	554	52%	2579	178	36%	1649	12%
2007	M	7123	5457	368	77%	3787	954	53%	1732	98	24%		
2008	F	6684	5045	516	75%	3566	534	53%	1948	124	29%	1809	14%
2008	M	6693	5106	548	76%	3665	661	55%	1354	122	20%		
2009	F	6906	5497	353	80%	3139	403	45%	2083	72	30%	2103	15%
2009	M	6849	5466	380	80%	3427	835	50%	1441	79	21%		
2010	F	6793	4988	161	73%	3522	757	52%	2318	112	34%	1529	11%
2010	M	6757	4933	628	73%	3586	910	53%	1486	141	22%		
2011	F	6427	5020	473	78%	3313	410	52%	1804	99	28%	1666	13%
2011	M	6429	4946	644	77%	3264	638	51%	1336	119	21%		
2012	F	6803	5426	249	80%	3156	546	46%	2341	32	34%	1986	15%
2012	M	6680	5358	276	80%	3498	628	52%	1373	116	21%		
2013	F	6635	5019	287	76%	3474	442	52%	2201	46	33%	1556	12%
2013	M	6858	5358	260	78%	3703	923	54%	1449	104	21%		
2014	F	6885	5318	297	77%	3662	477	53%	2396	30	35%	2227	16%
2014	M	6915	5375	623	78%	3524	730	51%	1578	105	23%		
2015	F	6661	4455	237	67%	40	0	1%	0	0	0%	2321	17%
2015	M	6788	4662	291	69%	184	0	3%	24	0	0%		
2016	F	46	22	0	48%	0	0	0%	0	0	0%	1954	100%
2016	M	35	25	0	71%	0	0	0%	0	0	0%		

**ALL HERDS  
Completeness of Performance  
Carcase**

Calving Year	Sex	Animals	Scan EMA		Scan Rib Fat		Scan Rump Fat		Scan IMF		Abattoir
			No.	%	No.	%	No.	%	No.	%	
2002	F	6844	1060	15%	1048	15%	1048	15%	594	9%	0
2002	M	6644	1872	28%	1850	28%	1850	28%	718	11%	0
2003	F	6751	1105	16%	1107	16%	1107	16%	629	9%	0
2003	M	6836	2033	30%	2037	30%	2035	30%	857	13%	0
2004	F	6848	1364	20%	1364	20%	1364	20%	824	12%	0
2004	M	6656	2088	31%	2089	31%	2089	31%	954	14%	0
2005	F	7028	1232	18%	1232	18%	1232	18%	715	10%	0
2005	M	7115	2024	28%	2023	28%	2025	28%	789	11%	0
2006	F	7167	1011	14%	1011	14%	1010	14%	484	7%	0
2006	M	7259	2046	28%	2044	28%	2045	28%	618	9%	0
2007	F	7181	1211	17%	1210	17%	1212	17%	489	7%	0
2007	M	7123	2027	28%	2028	28%	2028	28%	626	9%	0
2008	F	6684	1166	17%	1166	17%	1166	17%	479	7%	0
2008	M	6693	1894	28%	1892	28%	1894	28%	503	8%	0
2009	F	6906	1125	16%	1126	16%	1125	16%	522	8%	0
2009	M	6849	1959	29%	1961	29%	1959	29%	782	11%	0
2010	F	6793	1402	21%	1401	21%	1400	21%	961	14%	0
2010	M	6757	1919	28%	1918	28%	1922	28%	1213	18%	0
2011	F	6427	1554	24%	1554	24%	1552	24%	1262	20%	0
2011	M	6429	1898	30%	1897	30%	1899	30%	1340	21%	0
2012	F	6803	1693	25%	1693	25%	1691	25%	1399	21%	0
2012	M	6680	2082	31%	2085	31%	2086	31%	1644	25%	0
2013	F	6635	1666	25%	1664	25%	1657	25%	1394	21%	0
2013	M	6858	2302	34%	2303	34%	2304	34%	1780	26%	0
2014	F	6885	1817	26%	1817	26%	1816	26%	1596	23%	0
2014	M	6915	2222	32%	2223	32%	2223	32%	1660	24%	0
2015	F	6661	1	0%	1	0%	1	0%	1	0%	0
2015	M	6788	174	3%	174	3%	174	3%	173	3%	0
2016	F	46	0	0%	0	0%	0	0%	0	0%	0
2016	M	35	0	0%	0	0%	0	0%	0	0%	0

# 2016 NZHA Bull Sale Results

To view results submitted by breeders go to: [www.herefords.co.nz](http://www.herefords.co.nz)



# Managing Genetic Conditions

Genetic conditions or defects are caused by DNA abnormalities and are present in all species, including beef cattle. The incidence of genetic conditions is normally low within a population but increases in inbreeding or the rapid dissemination of genes through artificial breeding, can lead to a rapid escalation in the prevalence of a condition.

Over 400 genetic conditions have been identified in beef cattle. Approximately one quarter of these are caused by a single gene mutation, making them easy to manage through DNA testing. Historically, genetic conditions were managed by extensive progeny testing or by eradicating all known relatives of the effected animal. This resulted in production losses and the potential loss of superior genetics. Developments in DNA testing and gene probability technology now allow breeders to more easily manage genetic conditions such that production losses and spread of the mutation can be minimised.

## Recognising Genetic Conditions

Genetic conditions generally result in:

- Poor growth and fertility performance. For example, calves with Protoporphyrin (photosensitivity) develop scabs and open sores when exposed to sunlight and have reduced liver function, which in turn decreases their overall performance.
- Structural unsoundness. For example, animals with Snorter Dwarfism have a short, blocky appearance with deformed bone growth in the nose, causing difficulty breathing.

- Semi-lethal - Not all affected individuals survive to maturity. For example, many calves affected by Contractural Arachnodactyly (CA) will die shortly after birth because they are unable to stand and suckle. Those calves who are able to stand will often survive to maturity but have poor growth performance.
- Lethal - No affected animals survive to maturity. For example, animals affected by Pompes will typically die between 6 to 12 months of age after displaying progressive muscular weakness.

The symptoms of genetic conditions can be quite nonspecific. When large numbers of calves are dying or being born with similar abnormalities, both environmental and genetic causes are suspected. Consequently, there is a need for the surveillance and reporting of abnormal calves to breed societies, veterinarians or beef technical officers if genetic conditions are to be identified. Photographs and DNA samples from affected animals should be collected to aid in the identification of the condition.

## Mode of Inheritance

Genetic conditions have different modes of inheritance. Many have a simple recessive inheritance of a single gene mutation making them easy to manage. These single gene recessive genetic conditions result in 3 possible genotypes:

- Free – animal carries two normal genes and no copies of the mutation.

## GRASSMERE POLLED HEREFORD STUD and Kane Farms

*Would like to thank all the purchasers  
Monymusk Gallant sons for stud duties this year.*

Okawa Stud - Nick & Penny France  
Merrylea Stud - James & Georgina McKerchar  
Te Puna Stud - Cam Gerrard  
Martin Farming - Richard & Denise Martin  
Seadowns Stud - CA & LB, S&N Gibson  
Tarangire Stud - Malcolm Harvey  
Glenbrae - Martin & Mary Taylor  
Rockend Stud - Family McCormick  
Kokonga Stud - Bruce & Pip Robinson

Semen available for this most influential sire. Monymusk Gallant contact Chris Jefferies  
Ph/Fax 03 319 8585. Mobile: 0274 608 849

**Price \$80 a straw min order 20 straws**



"your outdoor timber specialist"



# WATCH OUT! THE RHINO IS CHARGING!



The Rhino™, Goldpine's newest fence post, is a fence post with a difference! Easy to work with and easy to handle, this post looks great and is suitable for a variety of uses. The Rhino™ is big and strong and its smooth finish means you don't have to worry about damage to your stock and there are attachment options all around the post.

With a full, flat face the Rhino™ is perfect for strong, secure rail attachment and is produced from high density, high strength mature logs, which ensures that first and foremost, the Rhino™ is an extremely strong and durable fence post. The Rhino™ comes in three sizes and is available in store now!



## RHINO™ BENEFITS

PRODUCED FROM HIGH DENSITY, MATURE TREES WHICH GIVES THE RHINO™ ITS **HIGH STRENGTH**

A **FULL FLAT FACE** MAKES THE RHINO™ **PERFECT FOR RAIL ATTACHMENT**

POINTED TO DRIVE EASILY (UNPOINTED ALSO AVAILABLE) AND PRODUCED FROM FURTHER DOWN THE TREE, MEANS THE RHINO™ IS **STRONGER THAN AN EQUIVALENT ROUND**

THE **UNIQUE SHAPE** OF THE RHINO™ IS A TRADEMARK OF GOLDPINE

ONLY THE GENUINE RHINO™ HAS A **50 YEAR TREATMENT GUARANTEE** - THAT'S GREAT VALUE!

BEING SMOOTH MEANS THE RHINO™ **LOOKS LIKE A ROUND**, IS **EASY TO HANDLE** AND GIVES **ATTACHMENT OPTIONS ALL AROUND THE POST**

- BIG AND STRONG, WITH A SMOOTH FINISH
- FULL FLAT FACE - PERFECT FOR RAILS
- STOCK FRIENDLY
- 50 YEAR TREATMENT GUARANTEE
- THE UNIQUE SHAPE OF THE RHINO™ IS A TRADEMARK OF GOLDPINE

0800 2 GOLDPINE (0800 2 465 374)

www.goldpine.co.nz