



hooked on HEREFORDS

THE BI-MONTHLY NEWSLETTER OF THE NEW ZEALAND HEREFORD ASSOCIATION



Hereford Bulls arrive at new North Island Grazing Unit

Nine Hereford registered bulls were unloaded on Friday 5th February, having travelled well, some as far away as South Auckland, to embark on their 15 week controlled grazing at Paki-Iti Farms Ltd in Kimbolton. Meanwhile their Southern counterparts, all fourteen of them (well done South Island

breeders!) have settled in at the South Island Grazing Unit at Silverstream, Canterbury. Jimmy Murray, NZHA councillor and Hereford Beef Expo representative, said "the bulls are looking well for their travels and there are some very promising bulls amongst the mix".

DIARY DATES 2016

- 29th Feb - 1st March
NZHA Council Meeting, Feilding
- 29th Feb
NI Grazing Unit - Inspection Day, Kimbolton
- 2nd March
SI Grazing Unit - Inspection Day, Akaroa
- 26th March
Copy due for April newsletter
- 18-25th April
World Hereford Conference in Uruguay
- 13-17th May
B+L NZ FBNZ - Tru-Test Beef Expo 2016

CONTENTS

- 2 NZHA President's Note
- 3 Hereford Prime NZ
- 4 Hereford Australia Youth Ambassador to NZ
- 5 Council Communications
- 6 Tru-Test Beef Expo 2016
- 8 B + L NZ Genetics 2016 Beef Extension Field Days
- 10 NZ Hereford Ambassador to Australia 2016
- 11 True Blue Hereford 'H' Tags





President's Note

Who would have thought two months ago when we were expecting one of the worst droughts in living memory, we would now have had over 200mm of rain for January, with more promised for the coming days and most of the country enjoying abundant growth, apparently it's a WET El Nino. Although the forecasters got it wrong this time I have to say that their predictions a few days out from a weather event are very accurate, in this part of the country at least.

John McKew, CEO of Herefords Australia and **Andrew Donoghue, their Commercial Development Officer** will attend our next NZHA Council meeting at the end of the February to present, discuss and share respective strategies and plans for 2016 and beyond. These discussions will include an update on their Progeny Test (Beef Information Nucleus) Project, their Black Baldy Crossbreeding trial, Hereford Branded Beef Program and Genomics Roadmap/Policy.

We will be looking for opportunities during these discussions to have greater involvement with our Australian counterparts. Another important aspect of the meeting will be to discuss how we (Australia and New Zealand) can significantly improve the sharing of performance data (phenotypic and genotypic) with the North Americans (i.e. the American Hereford Association and the Canadian Hereford Association).

There will be a 2016 NZHA Council election in the South Island with three candidates contesting the two available two seats. Sitting Councillors Chris Douglas & Paul Scott have been renominated

with new nomination Robert Peacock also standing; positive signs compared to the North Island where we have unfortunately not had new nominations for several years.

In early April, thirty NZHA members will be travelling to South America for the World Hereford Conference which is being held in Montevideo. We are spending some time in Argentina prior to the conference and then in Uruguay post the conference returning in time for Beef Expo in May.

Tourism NZ have been very helpful in supporting our 2020 WHC bid proposal and 2016 WHC presentations supplying footage for the presentations as well as assisting with financing some of the associated costs. Bruce Robertson from the Duncraigen Hereford Stud in Southland, a past NZHA President and previous WHC/NZHA delegate will be presenting the NZ Hereford bid proposal for the World Hereford Conference in 2020, which we are looking to host in Queenstown.

By the time you read this note, the 2016 Hereford Expo bulls will have arrived at their respective grazing units. There are very good numbers in the South, however low entry numbers in the North Island which is disappointing for our new North Island Bull Unit grazer. Plans are well underway for the Hereford events held on the Monday of Beef Expo... viewing of the bulls, breed luncheon and associated activities at the Grazing Unit at Paki-iti farm.

Kind regards,
Philip Shepherd, President, NZHA

Registry Report

CALF ENTRIES ARE DUE IN BY 30 APRIL 2016

Late Calf registration fees will apply from 1 May.

WEIGHTS AND SCANNING CUT-OFF FOR THE MONTHLY GROUP RUN IS THE 3RD OF EVERY MONTH

Linda Shailer
Registry

HONORS' BOARD

- Nichola McLeod, Horizon
- Noel Smith, Newcastle
- Colin Corney, Colrairie
- Johnny Dorotich, Gembrooke
- Val Everaarts, Taunoka
- Ash Karl, Orira

Congratulations to you all & thank you!



Editor: Donna Abbiss, NZHA
Address: PO Box 503, Feilding 4740
Phone: 06 323 0745
Fax: 06 323 3878
Email: office@herefords.co.nz

www.herefords.co.nz
www.herefordprime.co.nz



www.facebook.com/nzherefords



COMPILED BY pivot design, PBBnz

Hereford Prime – Pioneers In Eating Quality

Did you know Hereford Prime pioneered quality eating beef for branded beef programmes in New Zealand?

The brand was established in 1992 and from day one it has individually inspected and measured each carcass in the chiller to provide consumers with an unrivalled dining experience.

The best beef dining experience is determined by a number of carcass traits and it's these traits that are measured and recorded against each carcass by trained carcass assessors in the chiller.

These measurements are recorded for every carcass and sent back to the supplying farmer, providing him with valuable insight into how each carcass performed and therefore the genetics used on-farm.

Every Hereford Prime carcass is weighed then tested with a pH meter to check for the ultimate pH level – 5.8 or below must be recorded. This measurement is taken between the 12th and 13th rib not less than 24 hours after slaughter.

Marbling, fat colour and meat colour are all graded and recorded using Hereford Prime's own colour charts and marble score scale. It's important for the right amount of marbling to be recorded as marbling plays a vital role in the flavour and juiciness of your beef once cooked. Meat and fat colour are also

important and should be a nice cherry red flesh accompanied by white fat. Meat and fat colour are important because consumers select their beef with their eyes as much as their taste buds. Extreme meat or fat colour can also be a result of a high pH or spoiled beef.

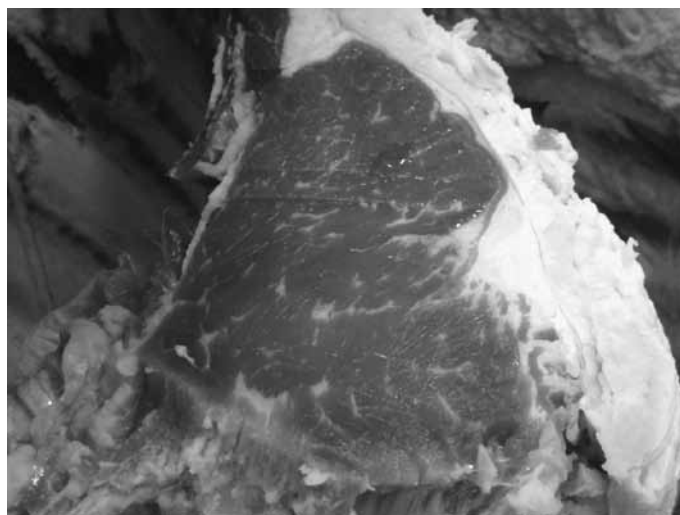
Scores for marbling, and meat and fat colour are also taken between the 12th and 13th rib. The rib eye size is also measured (at the same location) and supplied back to farmers.

All this information helps provide farmers with carcass performance data which allows them to look at on-farm management practices and also make informed genetic selections.

Each supplying farmer is sent a Hereford Prime feedback sheet which clearly outlines how each carcass stacked up against the brand's quality criteria.



Bodies consigned for Hereford Prime in the chiller prior to testing. The cut indicates where the carcass measurements are taken.



The view between the 12th and 13th rib where the quality measurements are taken on a Hereford Prime carcass.

PHOTOS WANTED

Hereford Prime is looking to source a selection of high resolution digital images it can use for promotional purposes. In particular we'd like a selection of photos showing mobs of Hereford or Hereford cross steers or heifers in their natural environment on the farm. We'd also like any photos of you using Hereford Prime beef or its products in the kitchen. Perhaps you have even dined out recently and enjoyed a meal of Hereford Prime in a restaurant and taken a photo of it – feel free to send us those photos too.

It is intended these photos will help build Hereford Prime's library of suitable images that we could use for advertising, in brand brochures and on our social media accounts in the future – so it is vital they are high resolution.

If you have something that you think might be useful, email it to Natalie Campbell, Hereford Prime brand manager at: herefordprime@pbbnz.com



2016 Herefords Australia Youth Ambassador to NZ

Verity Price will join the NZ Hereford Ambassador Tour in February 2106 and will also travel around the lower North Island and Southern South Island visiting several NZ Hereford Studs

Introducing Verity...

University student and Hereford Youth member Verity Price has been awarded the Herefords Australia Youth New Zealand Exchange. The scholarship, which aims to foster Hereford youth aged between 18 and 30 years of age, with the winner hosted by the New Zealand Hereford Association.

The 19-day itinerary, from February 12 to March 7, includes a New Zealand Hereford Association technical tour and a "hands on" feel for the NZ beef industry.

The 19-year-old from Bannister, NSW, grew up on a prime lamb property but was encouraged to take an interest in the cattle industry by neighbours Elizabeth Ikin and current Herefords Australia director Ken Ikin of Cloverlee Poll Herefords. Miss Price founded the Armagh Poll Hereford stud in 2010 and has competed in junior judging and parader competitions at local, state and national level.

After graduating from Trinity Catholic College, Goulburn, in 2013 she began a Bachelor of Business Management and Agriculture at Charles Sturt University, Wagga Wagga and is due to graduate in 2016-2017.

In 2013 Verity travelled to northern Queensland (inland of Nebo QLD) to further her understanding of the Australian beef cattle

industry and recognise the dependencies our international counterparts have for Australian beef.

Last year, she undertook industry practice at the Cattle Council of Australia, working in the policy department, liaising with producers, peak industry bodies and state and federal governments.

Miss Price aims to help raise the voice of producers across Australia. "In the future, I would like to play a role in increasing relationships of peak industry councils and breed specific organisations, such as Herefords Australia," she said.

"Better communication would lead to a greater awareness around the importance and dependency Australia has upon our beef cattle industry.

"This exposure with such prominent and influential peak industry bodies would essentially create the opportunity for both organisations to expand and generate profit."

Miss Price said her passion for market access and marketing was driven by the desire to see Australia increase exports and have a self-sustaining domestic red meat industry.

"It is obvious the demand for Australia's beef is going to continue to develop, as the demand for quality assured protein is growing alongside the population," she said.

Streamlining success with Premium Support



With the growing use of EID tags and the increasing computational power of weigh scales and readers, farmers are finding many more ways to improve their businesses through collecting, manipulating and analysing their animal data.

Tru-Test has recognised farmers' growing desire to get more out of your data and has recognised the need to tackle more sophisticated data management beyond standard technical support associated with introduction, set up and early troubleshooting after the purchase of a product.

To meet demand, Tru-Test has developed a Premium Support Package. The Premium Support Package will help you set up your own personalised seasonal plan, reduce time wasted in the yards and ensure data collected is the right data for the outcome you are after. At each stage of the season the Premium Support Package will assist with set up, data cleansing, data



transfer and retrieving key actionable information. Customisable packages are available for requirements beyond the Premium Support Package.

Council Communications

Please read carefully ...

NZHA Council Elections 2016

As you are aware, the NZHA round of 2016 Council nominations have recently closed.

No new North Island nominations were received however one further nomination from a South Island breeder was received, as well as the two current South Island Councillors, retiring by rotation, being renominated. (P. Scott, C. Douglas and R. Peacock) The new NZHA Constitution, states that NZHA Council numbers can float between 7- 12, however the interisland ratio of North Island to South Island Councillors must be 7:5 if twelve Councillors, down to a 4:3 ratio, if seven Councillors. A South Island election is required this year to maintain the correct ratio.

ATTENTION SOUTH ISLAND BREEDERS
A South Island NZHA Councillor Election is to be held, for the two available seats from the three nominations received.

Only South Island breeders are eligible to vote – please find voting forms in this Hooked on Herefords mail out.

Voting – closes Friday 11th March.

Animal Disposal Lists – Discount for returning by due date

These are due on 1 June of each year to provide a current inventory of registered females within each stud.

The return of completed ADL's by due date of 1 June; will in the future be eligible for a 5% discount in female fees.



PBBNZ and Equine Parentage & Animal Genetic Services at Massey University are once again delighted to co-sponsor the DNA testing (DNA Profiling/Sire Verification and Genetic Defect testing) for all NZ Hereford Expo entries.

(Animals must be sold at the NZ Hereford National Sale.)

This is in response to the immense support and loyalty we receive from NZ Hereford members with the volume of DNA testing processed through PBBNZ.

The Equine Parentage & Animal Genetic Services run two panels of microsatellite markers. Panel one consist of the 12 ISAG (International Society of Animal Genetics) markers as stipulated by regulation and an extra 6 markers which improve their ability to solve sire/dam verifications.

NZHA sincerely thanks PBBNZ and Equine Parentage and Animal Genetic Services at Massey University for their generous sponsorship.



Tru-Test Beef Expo Hereford Sale 2016

Entry Conditions

Entries close – March 2, 2016



DNA – all entries both male and female must have a DNA profile on file.

Correct Sire Verification– sires of all Beef Expo entered animals (male and female) must have been DNA profiled. Please check that a correct sire DNA profile is on file.

Genetic Defect Testing – including Hypotrichosis, **Diluter and Idiopathic Epilepsy**. In 2016 it is compulsory for all Hereford Beef Expo entries (male and female) – to be tested for all three defects and be declared free. Declaration to be placed in the catalogue comments section of the entry form. (Note: Diluter and Idiopathic Epilepsy testing comes at no additional cost when testing for Hypotrichosis – for tests taken at the same time).

BVD – compulsory Beef Expo regulations apply to all entries. All animals must have been tested BVD antigen negative and have been vaccinated twice prior to the Beef Expo genetic sale. The BVD vaccination declaration must be signed by the vendor (not necessarily a veterinarian) and the batch number of the vaccine batch administered supplied. A copy of the BVD antigen test must be attached to the BVD vaccination declaration.

TB – all entries must have been tested within the 12 months prior to the National Hereford sale, regardless of the herds testing cycle. If coming from a movement control area the animal must have been tested and cleared within 60 days of the sale. A TB test receipt is required.

TB and BVD certificates/ receipts must be lodged with the Hereford office no later than Friday 13 May 2016.

NZHA Inspection process – Super Sires/Unled Impact Sires

- Bulls that are on NZHA grazing unit properties will be inspected on a given day by the owners of these animals. All owners are expected to attend the 'Inspection' Day.
- The vendors will be given a card with all the bull numbers on it. The bulls are paraded for inspection. No one will have the opportunity to speak about their bull/s – they will be silently and anonymously judged by vendors present on soundness and phenotype.
- Bulls deemed good enough are given a tick and those that are not are given a cross.
- Judging results - if a bull receives crosses from more than 25% of the vendors present then the animal will be sent home.
- a 75% pass rate by vendors present is required for a bull to pass the inspection process.

- Grazing charges will be adjusted for bulls inspected out at 50% of full grazing charges.

Led Bulls/ Heifers

- An NZHA representative present at the Inspection Day along with a stud stock agent will be asked to travel the North Island and inspect the led bulls and heifers.
- The same process will be followed for the South Island entries.
- The NZHA representative will be appointed by the NZHA Show and Sales Committee.

'Starter Pack' Heifers Pairs - entries will be limited to two pairs per vendor and the Hereford Beef Expo committee reserves the right to limit entries in this class. They are also subject to the inspection process.

'Single Entry' Heifer class - Breeders are able to enter an individual heifer in the Hereford Expo event. They are also subject to the inspection process.

Pick of the Drop Female class – A new class in 2016. Purchasing by way of video auction during Beef Expo Hereford National Sale, the opportunity to have the first pick of a female calf – 2015 born, from a stud which has entered this class. Stud entries will be listed in the Hereford Section of the Beef Expo catalogue.

One 'pick of the drop' entry per stud. (not inspected and not selected prior to auction). Cost of entry \$200 +GST. Visual presentation could include generic stud 'still' photographs or video footage.

Impact Sires (unled two-year-old bulls) – entries are subject to the same conditions as Super Sires with the exception being, they do not have to be joined with females AND do not have to come from a management mob greater than 15. Unled Impact sires are to be grazed with the Super Sires. Any bull entered in the unled class cannot be displayed on a halter.

Checklist All 2016 Beef Expo entries both male and females, will be required to be:

- Correctly Sire verified
- DNA profiled
- Hypotrichosis, Diluter and Epilepsy tested, and declared free
- Adhere to BVD and TB

Hereford Performance Data Requirements

Performance Data must enter the March 2016 group run

Tru-Test Beef Expo 2016 – Entry Forms

The Tru-Test Beef Expo entry forms, including the Hereford, Allflex NZ Champion Heifer and Future Beef are now available on the Beef Expo website (www.beefexpo.co.nz) and the NZ Herefords webpage (www.herefords.co.nz). You can access the Tru-Test Beef Expo Website via NZHA website's home page by clicking on the link.

If you would prefer to receive a hard copy, please contact Laura at the Hereford office on office@herefords.co.nz

NZHA look forward to seeing strong entries for the Hereford classes as well as showing support to the new Allflex NZ Champion Heifer Class. Hereford and Beef Expo Conditions of sale can also be found on the webpages and must be agreed as stated on entry forms.

analysis and be submitted by March 3, 2016. NO EXEMPTIONS permitted. This pertains to male and female entries with NO EXCEPTIONS. (Expo entry will be declined, where performance data on the traits outlined below has not undergone MARCH 2016 group run analysis).

Performance Data required:

- i) Vendors must submit the following performance data for Grouprun analysis and EBV generation in the March group run.
 - Weights - a minimum of birthweight, 200day and/or 400day and/or 600day weights.
 - Rib, Rump and EMA scanning information (except yearlings).
 - Scrotal measurement for all two-year-old bulls.
- ii) H, J, S, P codes must be recorded on the expo entry form.
- lii) Genetic defect clearance to be stated on expo entry form under comments.

2016 Yearling Entries – date of birth must be after 01/06/2015.

2016 HEREFORD SALE ORDER:

- Supreme Champion Hereford
- Reserve Champion
- Super Sires (in catalogue order)
- Impact Sires (in catalogue order)
- Led Sires
- Yearlings
- Females

NZHA Sale Draw

The draw for each division is to done by 'a draw out of a hat'.

NZHA Council sees this as encouraging new breeder and further participation in the Hereford National Show & Sale.

Fertility Testing/ Semen testing

To remain an individual breeder responsibility. However the NZHA Council encourages breeders who enter bulls which are not proven sires, to have the animal semen tested. (This is not a mandatory ruling as semen testing prior to entering a bull in the sale does not 100% guarantee fertility at time of sale or indeed mating time).

Raw Data – there will be no collection of Hereford Raw Data at Beef Expo 2016. Breeders can however display data in stalls if desired and include it in the comments section of the entry form.

NAIT tags – all Hereford animals must display an official NAIT EID ear tag. (As well as adhering to NZHA double tagging rule).

Other Terms and Conditions of the Tru Test Beef Expo Executive that NZHA vendors are required to adhere -

1. Theileria Tick Management - Explanation

Theileria Ikeda is a parasite that is transmitted by ticks on cattle that can cause anaemia and production losses – sometimes death. Cattle are at risk when they are moved to areas where infected ticks are present. Likewise if an infected animal is transported it can spread infected ticks to a new area. The disease is not spread by direct animal to animal contact in the absence of ticks, and there are no known human health or food safety risks associated with Theileria.

Beef Expo has chosen to implement a tick management regime to prevent the movement of infected ticks for animals involved with Beef Expo.

All animals entering Beef Expo are to be treated within 2-7 days of leaving their property of origin, either going to a Grazing Unit or Beef Expo directly (breeder responsibility). Grazing Unit animals will receive a repeat treatment before being transported to Beef Expo (Breed society responsibility).

After Beef Expo sales, all animals will be treated again as they are trucked from Beef Expo. (This will be the responsibility of Beef Expo). The exception being FBNZ steers going to slaughter.

There are two pour-on products readily available to treat ticks:- Bayticol from Bayer Animal Health and Vetmed Flumethrin Pour-On from Ravensdown Animal Health. Flumethrin is the active ingredient. Neither advises of a meat or milk withholding period. Always seek veterinary guidance if concerned.

2. Animals to be 'Fit for Show and Sale' clause

All Beef Expo entrants agree to abide by Beef Expo Executive that the cattle are fit for show and sale.

For more information

www.beefexpo.co.nz

Attention Breeders with entries Led Cattle classes at Beef Expo

Due to new health and safety regulations effective April 1 2016 all electrical devices i.e. clippers & groomers need to be electrical tested and tagged.

What's on at Tru-Test Beef Expo 2016?

The Beef Expo Executive are building on last year's strong Beef Expo and are excited to announce a few new initiatives to their programme.

Live Streaming is here to stay, along with the very successful B+L NZ Genetics Breakfast on Tuesday. In addition B+L NZ Genetics are holding a forum on the afternoon of Sunday 15th May. More details to follow.

NZ Allflex Champion Heifer is open to registered Heifers born between the 1/6/2015 and 31/10/2015 with proof of a 5 generation pedigree. Classes will be split into led and unled with a B+L NZ Genetics performance class (75% EBV, 25% visual) and a visual class. The EBVs will be assessed against their own breed's average and not compared between breed, to determine the winner of the B+L NZ Genetics Performance class. There is sizeable prize money up for grabs including a \$2,000 cash and an Allflex reader wand valued at \$2,500 for Champion Heifer. This class is designed to encourage the very best of the best Heifers to attend Beef Expo. The judging will be on Monday afternoon with the sale of the Heifers at Tuesday Lunch.



Another new initiative is the NZHA 'Pick of the Drop' also established to provide a fantastic opportunity to buy in some new female/maternal lines. 'The Pick of the Drop' will be sold by way of video auction on Tuesday 17th May, with the flexibility for you to visit the stud and choose your heifer of choice from the 2015 calf drop.

Beef + Lamb New Zealand Genetics 2016 Beef Extension

1. Beef Progeny Test Field days

The Beef + Lamb New Zealand Genetics Beef Progeny Test has now completed its second round of A.I and has its first crop of calves to be weaned. With close to 2200 cows inseminated in the recent mating, there is a wealth of information to come for farmers to use. The first field day series is based on weaning. Providing an opportunity to see which bulls perform in a variety of traits and environments. There will be a focus on:

- Identifying sire groups by weaning weight (200D)
- Body condition score demo and comparison to weight of calf weaned
- Potential for synchronisation and A.I on commercial farms
- New traits and opportunities from the trial

Progeny test calves will be on display. Practical demonstrations included. An exciting chance to view some of New Zealand's most iconic, large scale farms. Lunch will be supplied.

Dates:

31st March	Whangara farms, Gisborne
8th April	Caberfeidh Station, Hakataramea Valley, Otago
22nd April	Tautane Station, Central Hawkes Bay
6th May	Rangitaiki Station, Taupo
9th May	Mendip Hills Station, North Canterbury

2. Dairy Beef Progeny Test Field day – Limestone Downs, Waikato, Tuesday 16 February

3. Bull Buying Workshops

Targeted at the commercial bull buyer and facilitated by Beef + Lamb New Zealand Genetics, this workshop aims to assist farmers in making good decisions about bull buying to add more value to their farming systems.

Covering:

- Setting a breeding objective
- Choosing a bull breeder that matches that objective
- Using genetic information to assess sale bulls
- Using physical information to assess sale bulls
- Settling your new purchase in and ensuring he is annually evaluated for breeding soundness

Tru-Test Beef Expo Social Events

Country Extravaganza

Future Beef NZ and Beef Expo are thrilled to host the extremely talented Cam Scott (named Best Male Artist at the 2015 Country Music Awards NZ) at Manfeild Stadium on Saturday 14th May. Cam is not only a very successful singer, but is also a dedicated farmer, so we are lucky to have him entertain us during the Australian harvest! Food and beverages will be available to purchase in the Stadium and tickets can be bought at the door for \$25 making it an affordable and fun evening for the whole family.

'Farmlands Breed Banquet'

'Farmlands Breed Banquet', a come as you are, casual seated dinner catered by Hester Guy, with cash bar and notable speaker. A fabulous chance to celebrate the beef industry amongst friends.

Monday 16th May, 6.30pm at Manfeild Stadium Suites
Pre Booked and paid tickets only. Tickets \$55+gst per head to be charged to your Breed Account.

Email Kaylene to book tickets kaylene@pbbnz.com

This will be a sell-out event as seats are limited, so book now!

Postponed NZHA 2016 Power of the Beef Cow Field Day

It is with regret that the NZHA Power of the Beef Cow Field day to be held at Alpha Burn Station, Wanaka on the 26th February has been postponed due to the extreme drought conditions felt in the Wanaka area. We are currently looking at other options in the North Island and will keep you posted, however until then we wish the McRae family and all our breeders who are suffering from a particularly long spell of dry weather some relief and a hope for a good downpour soon.

Award Winning Hereford Prime

Available at:

BOWMONT WHOLESALE MEATS
Otepuni Ave, Invercargill - Ph: 0800 146 328

GREYTOWN BUTCHERY
Main St, Greytown - Ph: 06 309 9550

NEW WORLD HAVELOCK NORTH
Porter Drive, Havelock North - Ph: 06 877 8032

NEW WORLD HASTINGS
Cnr Heretaunga St E & Hastings St N, Hastings
Ph: 06 876 9881

NEW WORLD KAPITI
159 Kapiti Rd, Paraparaumu - Ph: 04 298 0011

NEW WORLD PAREMATA
93-97 Mana Esplanade, Paremata, Wellington
Ph: 04 233 1666

MAGILLS BUTCHERY
Jacob St, Te Awamutu - Ph: 0800 624 455

THE DALY LARDER, FEILDING
26 Fergusson St, Feilding - Ph: 06 323 4137

THE VILLAGE BUTCHERY & DELI
126 Ormond Rd, Gisborne - Ph: 06 867 7689

THE VILLAGE BUTCHER
4 Joll Rd, Havelock North, Hastings
Ph: 06 877 8218

WAIPAWA BUTCHERY
72 High St, Waipawa - Ph: 06 857 8789

WESTMEAT BLENHEIM
Cnr Alabama Rd & Main South Rd, Blenheim
Ph: 03 578 4554

WESTMEAT CHRISTCHURCH
394 Blenheim Rd, Sockburn, Christchurch
Ph: 03 348 7165

WESTMEAT ONLINE
www.westmeatonline.co.nz - Ph: 0800 692 882

www.herefordprime.co.nz



Dates:

- | | |
|------------|--|
| 3rd March | Garry McCorkindale (Glenside Simmentals),
Waitahuna RD 3 Lawrence. |
| 4th March | Bruce & Carolynn Robertson
(Dunraigen Herefords),
40 Mimihau School Road, RD2 Wyndham. |
| 20th April | Lin & Lindsay Johnstone (Ranui Angus),
662 Rangitatau East Road, RD 8, Wanganui. |
| 22nd April | Patrick Lane (Whangara Angus),
Waimoko Road, Gisborne. |
| 2nd May | Jono & Sarah Reed (Grampians Angus),
420 Cascade Rd, North Canterbury. |
| 4th May | Mark & Sherrie Stokman (Stokman Angus),
161 Hossack Road RD 1 Rotorua. |
| 23rd May | John & Joss Bayly (Waitangi Angus),
Bayly Road Paihia, Bay of Islands. |
| TBC | Wairarapa Workshop,
Contact B+L NZ Extension Manager
Lauren Cameron ph 0274 317 626 |



www.youtube.com/herfordprimenz



Like us on
www.facebook.com/herfordprimenz



follow us on
www.twitter.com/herfordprimenz



Videeing of bulls is available again in 2016 - this is an optional facility available to vendors of Hereford entries. Bulls in the grazing units can also be videoed with breeders authorisation, please contact NZHA office if this is of interest.

Sarah Perriam, Rural TV

will be facilitating this and can be contacted at sarah@ruraltv.co.nz or **021 922 993**
Individual breeders will be charged for the videoing cost.



NZHA to support Westpac Trust Rescue Helicopter Service in 2016

In conjunction with the 2016 Hereford National Show and Sale, NZHA once again encourages breeders to support the nationwide charity, Westpac Chopper Appeal. We will be seeking indications of support closer to the time.

We are united in our belief they are a charity worthy of our support due to our remote living.

NZ Herefords Ambassador - Australian Exchange 2016

NZ Herefords along with the Australian Hereford Society (AUS) are pleased to call for interested NZ Hereford breeders to apply for a sponsored exchange experience to Australia in May 2016. Candidates would need to offer the following personal qualities and attributes to be in contention for this experience.

- Ideally 25-35 years old
- Proven commitment to stud Hereford breeding
- Recognised as a contributor to NZHA and/ or beef industry initiatives
- Demonstrate knowledge of industry issues, animal husbandry and genetics, and NZHA policies
- Demonstrate ability to add value to future NZHA initiatives
- Of high personal calibre and character, showing NZHA in a positive light in all dealings with exchange contacts
- Prepared to table a report to NZHA and Herefords Australia on the experience and learning's from the trip

The visit, as per Australian Herefords Society (AHS) proposed itinerary would encompass an inspiring two week Australian Hereford experience, including - Herefords Australia, National Show & Sale (Wodonga) held on 11-12th May, 2016.

This Ambassador opportunity is certain to enhance your understanding of Australasian Hereford industry issues, provide invaluable contacts and increase your appreciation of Hereford cattle in diverse environments.

If you are interested, please send an application and short resume to the NZHA office, preferably by email to office@herefords.co.nz

Applications close – 1st March 2016

TRUE BLUE HEREFORD 'H' TAGS



- Identifying registered, performance recorded Hereford cattle.
- Tag package includes NAIT + visual tag sets.
- Blue male (back) tag denotes Hereford 'H', various colour options available for female (front) tag.

Competitive pricing – Choice of tag brand – Exclusive to registered Hereford breeders

For more information please contact: NZHA office or order now with the tag experts at PBBNZ phone 06 323 4484 or email tags@pbbnz.com

www.pbbnz.com

TRACTOR & LOADER

\$99,900. Plus GST

CLAAS
ARION 430.CIS
130 HP tractor

With CLAAS FL100 loader



- 4 cylinder 4.5L turbo charged engine
- Flexible QUADRISHIFT 16F/16R Transmission
- ELECTROPILOT - armrest loader joystick
- Factory fitted CLAAS loader

*Terms and conditions apply. 1.9% rate subject to minimum 40% deposit. GST back within 3 months. 36 monthly payments in arrears. Offer ends 31/03/16. Image is illustrative only.



Your local Harvest Centre Locations

Whangarei	Feilding	Dunedin
Hamilton	Christchurch	Wanaka
Rotorua	Ashburton	Gore
Hawera	Timaru	Invercargill
Hastings	Hokitika	

CLAAS Harvest Centre
www.claasharvestcentre.com

FARM BUILDINGS

PROUDLY BROUGHT TO YOU BY



"your outdoor timber specialist"

NEW ZEALAND'S LARGEST RANGE OF FARM BUILDINGS

Goldpine has been designing farm buildings since 1989. That means over 25 years of experience in all things farm building.

Largest Range. Unlimited Options.

Goldpine has the largest range of farm buildings in the market. Goldpine's farm building offering includes two distinct brands;

- Strongbuilt® - NZ's Strongest Farm Building
- Ned's Sheds® - Sheds That Do The Trick

We have an extensive standard kitset range, or our Farm Building Specialists can design your shed to your exact size and specification requirements. To ensure we supply you the right farm building solution there's some key information we need and the best location to gather this information is on the proposed building site. Our team of Farm Building Specialists are available to visit you

on site, to discuss your whole project, answer any questions you have and provide suggestions to ensure you get exactly the right solution. In some areas we can even project manage, right from the design of your shed through to its construction. We are confident we can offer you a complete range to choose from, whether it be a two bay lean-to shed for your quad bike, or a 4000m² wintering shed to house your valuable herd and a lot more in between.

We take great pride in our farm buildings and knowing we have New Zealand's largest range, we are confident we can provide the right farm building solution for you.



0800 2 GOLDPINE (0800 2 465 374)