



hooked on HEREFORDS

THE BI-MONTHLY NEWSLETTER OF THE NEW ZEALAND HEREFORD ASSOCIATION

AUGUST 2014

Issue 131

- 1 PRESIDENT'S NOTE
- 3 HEREFORD PRIME NEWS
- 5 NZHA COUNCIL COMMUNICATIONS
- 8 NZ HEREFORDS COMPLETENESS OF PERFORMANCE STATS
- 11 NZHA PERCENTILE BANDS

Diary Dates

26TH SEPTEMBER 2014
COPY DUE FOR OCTOBER NEWSLETTER

3RD - 4TH NOVEMBER
NZHA COUNCIL MEETING

12TH -14TH NOVEMBER
CANTERBURY SHOW

26TH NOVEMBER
COPY DUE FOR DECEMBER NEWSLETTER



Like us on
www.facebook.com/nzherefords



President's Note

Dear Members,

Herefords have enjoyed a great autumn bull selling season with many sale averages ahead of last year. We now wait to see what the spring sale results will be like with the recently released drop in forecasted pay-out for the dairy industry next year. Hopefully, dairy farmers and the need to preserve their bottom line will see value in breeding calves that have marketable potential and this will outweigh the belief by many that calves are just a necessary by product to getting milk in the vat.

The NZHA Council last week finalised the Governance proposal as per the directive from the membership at the 2014 AGM. We have formulated three remits which are now being circulated for further discussion, with the intention that the final wording will be approved at our November NZHA Council meeting after we have received final input from members. The proposed constitutional changes (or status quo remains) will be decided by postal vote ballot, held in January in conjunction with Council nominations/elections. The voting results will be announced at the AGM in Gisborne on the 22nd March 2015. It was decided to hold a postal ballot to allow all members the opportunity to vote on the proposed changes, rather than the outcome being decided by what may be a minority of breeders present at the 2015 AGM. The full wording of these remits is elsewhere in this newsletter for your information and have been circulated to all Hereford clubs also. The intention is to allow Council flexibility with the

numbers of representatives, rather than being forced to appoint someone to fill a vacancy if a willing candidate is not available. The voting changes have been requested by members to address what some see as an inequitable situation where a breeder with less than 50 cows has the same voting rights as a breeder that has several hundred cows. Council have developed a proposal that goes some way to rectifying this situation while not being unduly complicated.

Council also ratified parameter changes to the Merit Ancare Merit Dairy Sire programme, proposed by the Technical Committee after taking into consideration the feedback from members over the last year. The changes include a reduction in birth weight of the animal and parents, while maintaining the growth and Dairy Maternal Index figures, thus having the overall effect of reducing the number of qualifying yearling bulls from 340 in 2013 to 180 this year. The programme now offers the potential buyer of yearling bulls an animal that is of high MERIT i.e. has a birthweight in the top 10% of its year of birth calf drop.

All the best for a great spring and successful calving.

Kind regards,
Philip Shepherd.
President, NZHA



EDITOR: Donna Abbiss, NZHA
Megan Ellett, NZHA Assistant

ADDRESS: PO Box 503, Feilding 4740

PHONE: 06 323 4484

FAX: 06 323 3878

EMAIL: hereford@pbbnz.com

WEBSITE: www.herefords.co.nz
www.herefordprime.co.nz

COMPILED BY PIVOT DESIGN, PBBNZ

ISSN 1177-0961

OFFICE ENQUIRIES

NZHA Enquiries Donna Abbiss is available between 9am - 4.30pm, Monday and Wednesday OR Megan Ellett Tuesday and Thursday 8.30am -5.00pm. hereford@pbbnz.com

HP & NZHA Projects Natalie Campbell is available 9am-4pm Tuesday, Wednesday, Thursday OR herefordprojects@pbbnz.com

NZHA Registry Linda Shailer, is available to assist with your Hereford registry enquiries between 8am - 4pm, Monday to Friday. lindas@pbbnz.com

DNA Services Sharyn Anderson, 8.30am - 4.30pm, Monday to Friday. sharyn@pbbnz.com

Tag Ordering through the PBBNZ office, Monday to Friday. tags@pbbnz.com

Pivot Design Adele Gray, 9am - 4.30pm, Monday to Friday. adele@pivotdesign.co.nz

Registry Report

GROUP RUN CUT OFF is now the 3rd of each month with the return being towards the end of the month.

DNA PROFILES are required on all mating sires. They can be checked on the Hereford website under "Animal Enquiries". If you have not supplied required DNAs, registration of progeny cannot proceed as per NZHA regulations.

Contact the Office if you require envelopes for hair samples.

Remember even if it's not your bull, you will need to ensure there is a profile to register progeny in your herd.

PARENT VERIFICATION changes of an animal resulting from DNA profiling, needs to be initiated by the Breeder, even if the test has been done through PBBNZ.

ONLINE REGISTRATIONS & PERFORMANCE RECORDING

Contact me at the Office if you wish to register and performance record your herd data online. You will receive a 50c/animal discount on registrations when submissions are accurate.

Linda Shailer,
Registry

Welcome to new Hereford breeders

NZ Herefords would like to welcome the following new members to the Association and wish them all the best for their future Hereford breeding endeavours.

Name	Prefix	Town	Herd No.
Murray & Fiona Curtis	Riverlee	Kimbolton	1795
Jonathan & Juliana Trolove	Ballyams	Blenheim	1796

NZHA account payments

Please check your internet banking is set up with the correct NZHA bank account number. Ensure that payments are made into the NZHA RABOBANK account as the Westpac account will be closed on 30th September 2014.

The Rabobank account number is provided on all NZHA invoices and statements and is as follows: 03-1353-0228574-00

Just a reminder that when paying NZHA accounts please ensure that you include your NZHA customer number as the reference.

App-Driven Drafter Delivers Speed and Direction at a Touch

Simplicity and speed for on-the-spot decision-making is the key to Tru-Test's latest app-operated MilkHub Dairy Automation Autodrafter module.

Farmers will have the best of both worlds with great entry-level pricing and simple EID drafting functionality while having the advantage of modern smartphone technology all packaged with first-rate draft gate hardware.

A core function of the Autodrafter is the ability to set drafts using any Android™ or Apple™ (coming soon) smartphone or tablet devices, making the gate particularly attractive for farmers wanting to set up drafts while walking the cows into the shed, during milking or anywhere in the dairy shed area. The smartphone app operates over Wi-Fi which is built into the drafter so neither internet nor a PC set up is required at the shed.

Tru-Test's Product Manager Josh Baker says "We know that many sheds throughout the country do not have reliable internet coverage or a PC set up in the shed. That's where smartphones and mobile devices are coming to the fore. Smartphones are now used on the farm for all sorts of activities and it makes sense to utilise a piece of hardware the farmer already has and uses on their farm every day."

"We've found that farmers want to use their phones and apps to control and monitor Tru-Test's MilkHub equipment. The drafter app is the first in a series of app releases in the dairy space that will provide more and more functionality for MilkHub customers."

The Autodrafter's built-in 3G modem gives farmers the option to set, record and review drafts remotely via MilkHub's cloud-based MiHub Online Herd Management tool. All farm and cow data, reports and management tools can be accessible through MiHub.



Tru-Test launched its first app, Data Link, in 2012 enabling the direct download of session files from Tru-Test weigh scales and stick reader devices to the New Zealand and Australian national traceability databases or to the farmer's home office.

Tru-Test's MilkHub Dairy Automation modules include Electronic Identification (EID) Herd Tracking, Walk Over Weighing, Feed Control, Heat Detection, In-bail Identification and In-line Milk Sensors in conjunction with the MiHub Online Herd Management.

Watch the MilkHub Autodrafter launch video to see the drafter in action <http://www.youtube.com/watch?v=N41R2tBm42Q>

Weighty Win Beefs Up Student Dining

Rotorua girl, Kayla Conwell-Grant has filled her fridge with award winning Hereford Prime beef and small goods after edging out much heavier entries to take out the Tru-Test 'Win Your Weight in Hereford Prime Beef' competition held at this year's National Fielddays at Mystery Creek.

The 19 year old has been a regular visitor to the National Fielddays event attending with her family who have farmed in and around Kaharoa in the Bay of Plenty for many years.

The competition, launching Tru-Test's new 5000 series weigh scales, attracted thousands of participants willing to declare their weight for a prize of equivalent amount in small goods and premium cuts of mouth-watering Hereford Prime Beef.

A friend, excited by the competition and determined for his successful entry, brought Kayla to the Tru-Test site for the very purpose of jumping on the 5000 series weigh scales but it was Kayla who took out the prize coming in just shy of 60 kilograms.

In her first year flatting in Hamilton while studying towards a Bachelor in Sport and Leisure at Waikato University, she says the win is being welcomed by the flat as they prepare for the second semester of study.

Hereford Prime brand manager Natalie Campbell said she was thrilled for Kayla in her tasty win and was delighted the Tru-Test launch of their new 5000 series weigh scales was so popular.

"It was amazing to see so many people lining up to try out the new scales, there was a constant stream of people."

"Partnering with Tru-Test in the launch of the new scales also allowed us to expose our own brand to the large number of visitors to fielddays – and it was a great opportunity to show our support to Tru-Test," said Natalie.

Verne Atmore, Tru-Test's New Zealand Sales and Marketing



Mike van der Hoeven, left, from Magills Meats in Te Awamutu, Hereford Prime director Jan Wills and Sam Rainey, right, area sales manager from Tru-Test with Kayla Conwell-Grant winner of Tru-Test's Win Your Weight in Hereford Prime Beef competition. Photograph by David Wheadon.

Manager says the company has a long history of working with NZ Herefords.

"We are very pleased with the enthusiastic response to the 'Win your Weight in Hereford Prime Beef' promotion which helped launched our 5000 weigh scales series into the marketplace."

Magill Meats from Te Awamutu supplied the Hereford Prime steak cuts and small goods and Mike van der Hoeven was on hand to present Kayla with her prize along with Hereford Prime director Jan Wills.

Later that evening the flat-mates could not resist testing the steak.

"It was just absolutely delicious," said Kayla.

Award Winning Hereford Prime

Available at:

BOWMONT WHOLESALE MEATS,
Otepunu Ave, Invercargill — Ph 0800 146 328

FARRO FRESH,

Lunn Ave, Mt Wellington, Auckland — Ph (09) 570 7071

FARRO FRESH,

Parkway Drive, Mairangi Bay, Auckland — Ph (09) 478 0020

FARRO FRESH,

Westmoreland St, Grey Lynn, Auckland — Ph (09) 360 0499

GOURMET MEATS,

First Street, Masterton — Ph (06) 378 0226

GREYTOWN BUTCHERY,

Main Street, Greytown — Ph (06) 309 9550

MAGILLS BUTCHERY,

Jacob St, Te Awamutu — Ph 0800 624 455

THE VILLAGE BUTCHER,

Ormond Road, Gisborne — Ph (06) 867 7689

WAIPAWA BUTCHERY,

High Street, Waipawa — Ph (06) 857 8789

www.herefordprime.co.nz



www.youtube.com/herefordprimenz



Like us on

www.facebook.com/herefordprimenz



follow us on

www.twitter.com/herefordprimenz

herefordprime.co.nz

Future Beef NZ



Encouraging all young cattle breeders to enter steers in the 2015 event.

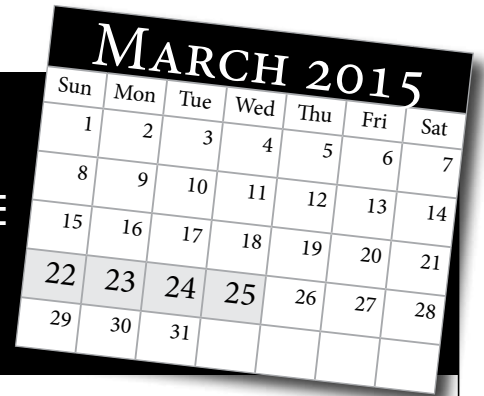
FBnz are also planning a heifer show next year which will be held on the Sunday evening. The details regarding the heifers are:-

Heifer must be born after 1st June 2014

- » Under 12's may bring a heifer only
- » Over 12's must bring a steer to be eligible to bring a heifer
- » Under 12's can use heifer in handling class but over 12's must use steer
- » Heifer judging will be after the Handling class on Sunday and the two classes will be purebred heifer and crossbred heifer
- » Pure Bred heifers can go home or may be eligible to enter in the Queen of Hearts (which must be organised prior to the event)
- » Cross bred heifers are accepted but will be taken home

Wish to find out more about the event?

Go to our website www.futurebeef.co.nz or contact Sharyn Anderson at PBBnz directly ph 06 323 0742



MARK THIS DATE IN YOUR DIARY!

National Hereford Herd Tour 2015 - Eastland Club

**Sunday 22nd -
Wednesday 25th March 2015**

NZHA AGM - evening of
Sunday 22nd March.

Further information to follow.

Joshstar Herefords

Would like to say a
thank you
to all of those breeders who
attended and supported their
first on-farm bull sale on
26th June 2014



Annual Sale 9th September 68 Ngataipua Road Thames - 12.30pm

Sale includes sons of

Matariki Holy-Smoke, Otapawa Spark,
Wirruna Daffy and Kairuamati Overland

All bulls fully performance recorded.

2 2 year bulls, **16** 18 month bulls, **25** 1 year bulls



View sale lots on
[kairaumatipolledherefords](https://www.facebook.com/kairaumatipolledherefords), Facebook

Contact Roy or Kaye Ward Ph 07 866 6821
Mob 021128 7174 Email kairaumati@gmail.com

Cam Heggie ph 027 501 8182

Council Communications

PLEASE read the following communication carefully.

Your feedback is important. Contact your local NZHA Councillor with any thoughts you may have.

Merial Ancare Merit Dairy Sire Programme

At the recent conference call meeting of the NZHA Council, proposed modifications to the Merial Ancare Merit Dairy Sire programme were ratified. The changes to the programme from 2014 onwards include a reduction in the birthweight of the animal to +2kg i.e. in the top 10% of 2013 bull calf drop and the parent's birthweight to reduce to +3kg. Growth parameters remain unchanged.

Under these parameters approximately 180 2013 born yearling bulls qualify as Merial Ancare Merit Dairy Sires. Noting, that all older bulls meeting the Merial Ancare Merit Dairy Sire programme parameters gain life time status - with this being displayed on Internet Solutions.

Letters will shortly be sent to qualifying yearling bull breeders, with a Merial Ancare Merit Dairy Sire certificate request form.

Important amendment to Calving Ease scoring.

An addition to Calving Ease Score 2 ...

To include unobserved difficulty i.e. Score (2) now reads Easy pull/ Unobserved Difficulty.

This is an important addition to the scoring system as it allows for more variability in a breeders scoring regime to occur. In effect, increasing the inclusion of scores by the Breedplan system for EBV extrapolation. Incorporate this into your 2014 calving records ... it will be worth the effort!

Completeness of Performance Reports

Breeders have recently received their 2014 Individual Herd Completeness of Performance report in the post and received email notification that individual herd star ratings were activated on Internet Solutions as of 1 August 2014. On Pg 8 and 9 of this newsletter please find NZHA 'All Herds' Completeness of Performance statistics. These make for interesting reading.

Note - The issue of animals being sold prior to 600 days (i.e. as beef bulls to the dairy industry) is accommodated within the Completeness of Performance system.

The benchmarks for the star rating are set at a level whereby some selection and culling is assumed, with an average score of only 165/200 being required to achieve a 5 star rating. Given only 12.5 out of the 200 points are allocated to 600 day weight, it is possible to achieve a 5 star rating if no 600 day weight information is recorded on bulls, especially considering 50% of the 12.5 points that are allocated refer to the 600 day weight recording on the heifer portion of the calves.

Marketing your own Stud - a Self Help tool kit.

As advised recently via the NZHA email system – Due to limited breeder interest shown in a 'Marketing Your Own Stud' workshop and the mixed level of stud industry experience by those who registered their interest, the NZHA Strategic Plan Marketing sub-committee have re-thought their approach to conveying useful marketing information to interested breeders.

Replacing an attendance required workshop, the NZHA will be developing a Marketing your Own Stud - a Self Help tool kit section for the NZHA website. This will consist of a series of articles (also reprinted in the hooked on Herefords newsletter) which will permanently feature on the website, for all breeders to utilise at their will.

The scope of articles would look to include:

1. An outline and direct link to Breeder marketing opportunities provided by Pivot Design and NZHA.
2. Marketing case studies/ interviews with successful established bull breeders
3. Marketing case study with successful rural sector business, outside of beef industry
4. Schedule of Marketing 'key points and tips' from Rural Marketing consultants/ experts in the field.
5. Interview with senior stud stock industry persons – their perception of what constitutes outstanding Bull Sale marketing/ bull vendor service.

The NZHA is also open to breeder suggestions as to the content of the 'Marketing Your Own Stud' website section. Please contact Councillor Paul Scott – if you have any thoughts.

Changes to Breedplan Carcase EBV's

Please note that a number of improvements have been made to the Carcase EBVs that are calculated for Hereford animals within the Hereford BREEDPLAN analysis.

The improvements relate to changes to the analysis of abattoir carcase information within the Hereford BREEDPLAN analysis and will result in the calculation of improved Carcase EBVs for animals on which abattoir measurements have been collected and their relatives. The EBVs for all other animals will generally be unaffected by these improvements. The EBVs for New Zealand Hereford animals should consequently be largely be unaffected, unless they are closely related to Australian animals with abattoir information (eg. sires in progeny test).

Note - In contrast to most traits that are analysed within the Hereford BREEDPLAN analysis, there are a relatively small number of animals for which abattoir carcase measurements have been collected. Furthermore, most of this abattoir information was collected some time ago in research trials within the Beef CRC (pre-2000) and World Hereford Linkage project (2004).

NZHA Proposed Governance Changes

Please read the following governance discussion document carefully. This has been circulated to NZHA club secretaries also for club consultation. All feedback is welcome - to be communicated to the NZHA office by October 20 2014.

Please note - the voting process will be in the form of a NZHA postal vote held in early 2015 to allow all members to vote on these important constitutional matters, opposed to a vote held at the 2015 NZHA AGM which involves only a partial representation of studs within the NZHA membership. Voting results will be announced at the 2015 NZHA AGM.

NZHA Governance

NZHA Council Recommendations to Membership

(As per 2014 NZHA AGM directive to review current NZHA Governance structure).

Please discuss at Club level and endorse/or to the contrary, stating reasons.

Return of Club feedback to NZHA office by 20 October 2014.

Voting on remits - NZHA Postal Vote for all members.

Results announced at the 2015 NZHA AGM – Sunday 22 March 2015, Gisborne.

1. Councillor Numbers and Island split

NZHA Constitution currently states –
MANAGEMENT AND COUNCIL

Councillors shall be elected from and by the eligible members of the Association in the manner herein provided. Until the Annual General Meeting of the Association in 1986 the business of the Association shall be managed by a Council of twenty (20) members and after the Annual General Meeting in 1986 the business of the Association shall be managed by a Council of twelve (12) members. Each Councillor shall be an owner or part owner of a herd of Hereford Cattle registered by the Association. Until the Annual General Meeting of the Association in 1986, twelve (12) of such Councillors shall be resident in the North Island of New Zealand and eight (8) of such Councillors shall be resident in the South Island of New Zealand. After the Annual General Meeting of the Association in 1986 seven (7) of such Councillors shall be resident in the North Island of New Zealand and five (5) of such Councillors shall be resident in the South Island of New Zealand. At the Annual General Meeting of the Association in 1986 upon the declaration of the result of the election of the Council in 1986 all Councillors hitherto holding office shall be deemed to have vacated their seats on the Council. In the election for Councillors prior to the Annual General Meeting of the Association in 1986 nominations shall be sought and accepted for the election of twelve (12) Councillors only in accordance with these Rules. Any Councillor holding office prior to the Annual General Meeting of the Association in 1986 shall be eligible for re-election to the Council.

Proposed changes to NZHA Constitution

Add - Minimum of 7 councillors based on North Island - 4 seats
South Island – 3 seats.

Amend – amend ‘managed by a Council of twelve (12) members’ to be ‘managed by a Council of a maximum of twelve (12) members’. (based on 7 North Island seats and 5 South Island seats as per constitution).

The above changes allow the NZHA Council numbers to ‘float’ between 7- 12 Councillors.

To be voted on with view to amending NZHA constitution.

Council Recommendation - to continue with 10 councillors as per current situation.

Additional Notes

- » 10 Councillors deemed satisfactory, however does put a high voluntary workload on fewer people.
- » Capability within Governance structure is important. Risks are that there may be too few people and not the required skillset.
 - Voluntary organisation –voluntary Councillor positions. Risk that NZHA councillors may walk away from position with excessive accountability pressures. Family, financial and business sacrifices involved.
- » Roles of Councillors – mix of governance and operational currently. Member feedback of 100% Governance role for Councillors. This would require additional NZHA staffing for operational purposes and an increase in NZHA staffing expense. (For example – Ag Innovation event, would require additional staff or breed volunteers to co-ordinate Grazing Units, Event stewardship – this is currently done by voluntarily by Councillors).
- » Suggestion that Executive Committee takes on Governance role only.
- » Currently NZHA Council sits at 6 NI councillors and 4 SI Councillors. This will alter to 5 NI and 5 SI Councillors by yr end 2014 when J Graham relocates from Waikato to Southland.

2. Voting Rights

Currently 1 Prefix = 1 vote

Members with 50 cows or less - located in NI 63% and SI 37%

Approximately 50% total memberships with less than 50 cow herds. Democratically is it fair that a 600 cow farmer vs. 3 cow farmer has the same voting allocation?

NZHA Membership consists of 170 votes NI and 61 votes SI
170 total breeders in NI, 111 votes are from 1-50 cow herds.

Larger herds to have greater share in voting rights. Suggest pro-rata voting options.

Council Recommendation -

1-50 cows	= 1 vote	ie 1 vote per remit
51-200 cows	= 2 votes	ie 2 votes per remit
201+ cows	= 3 votes maximum	ie 3 votes per remit

3. Voting Boundaries

Currently, members vote for candidates within the island they reside in.

Council recommendation that status quo on inter-island voting boundaries to remain.

4. Presidency Term

Currently NZHA President sits for a 2 year term only as per NZHA Constitution.

In extenuating circumstances, Council would like the option to re-elect a President for a further period if a valued and willing President contribution is available.

Council recommendation to include in NZHA Constitution: that in extenuating circumstances, the NZHA Council has the option to extend a Presidency term for an additional period to a maximum of two terms (four years).

**PROPOSED VOTING REMITS for NZHA
CONSTITUTIONAL CHANGES**

1. Councillor Numbers and Island split –

Add ‘minimum of seven Councillors’ (4: 3 NI & SI split.)

Add ‘maximum of’ to current twelve Councillors ruling.

2. Voting Rights - Suggest pro-rata voting system be introduced.

1-50 cows = 1 vote

51-200 cows = 2 votes

201+ cows = 3 votes maximum

3. Voting Boundaries – no change therefore no vote required.

4. Presidency Term

To include in NZHA Constitution: That in extenuating circumstances, the NZHA Council has the option to extend a Presidency term for an additional period to a maximum of two terms (four years).

* Voting papers will be posted to the NZHA Membership in January 2015, with a final date for voting stated.*

The NZHA Constitution currently states one vote per remit per stud. The above voting process will be undertaken on this basis.

Reference -

Herd Size Analysis – May 2014

Reg Females		North Island	South Island
1	50	111	23
51	100	20	10
101	150	9	12
151	200	10	5
201	250	4	4
251	300	4	3
301	350	4	0
351	400	2	1
401	500	0	1
501	600	2	2
600	plus	4	0

SEMEN FOR SALE BEECHWOOD TURK


JULY 2014 HEREFORD GROUP BREEDPLAN

DIR	DTRS	GL	BIRTH	200	400	600	MCW
+5.3	+4.4	-2.2	+1.7	+32	+58	+75	+70
63%	55%	85%	88%	84%	81%	82%	74%
MILK	SS	CAR	EMA	RIB	RUMP	RBY	IMF
+20	+1.4	+65	+5.9	+0.6	+1.0	+2.1	-0.1
61%	83%	71%	62%	67%	67%	62%	61%

NEW ZEALAND INDEXES \$


HP	Export	Maternal	Terminal
+\$120	+\$136	+\$125	+\$80

An easy doing young bull with incredible data




Beechwood Big Time
First son to be sold - \$10,000 to Koanui

Contact: Rob Burrows
Phone: 03 315 8167 Email rj.ma.burrows@xtra.co.nz



OTAPAWA
"The Home of Real Hill Country Cattle"



Spark

OTAPAWA SPARK 3060 - JULY GROUP BREEDPLAN

DIR	DTRS	GL	BIRTH	200	400	600	MCW
-0.2	+1.8	-5.2	+5.3	+48	+81	+117	+119
88%	80%	97%	98%	98%	97%	97%	94%
MILK	SS	CAR	EMA	RIB	RUMP	RBY	IMF
+19	+2.4	+83	+4.3	+1.3	+2.0	-0.1	+1.7
95%	97%	91%	82%	84%	88%	82%	86%

Number of Herds: 61
Scan Progeny: 295

Progeny Analysed: 817
Number of Dtrs: 148

SEMEN AVAILABLE
Price \$70 per unit or \$60 per unit for 20+ units

INDEXES \$

HP	Export
+\$145	+\$139
Maternal	Terminal
+\$101	+\$76

CONTACT Otapawa Poll Herefords
Stuart and Maria Robbie +64 6 376 6459 Mobile 027 848 4408
otapawa@xtra.co.nz www.otapawa.co.nz

NZ Hereford Association

Completeness of Performance 2014

The following statistical data has been extracted from a “Completeness of Performance” report produced for the NZ Hereford breed. It provides a summary of the information that NZHA seedstock herds have submitted to BREEDPLAN, with a range of statistics tabled ie details of the pedigree, weight, carcase, birth and fertility information that has been recorded.

ALL HERDS Completeness of Performance Animal Details

Calving Year	Animals	Sex			DOB		Sire Details				Dam Details			Mating Type			Recipient Dam	
		Male	Female	Ratio	No.	%	Unique	Mult	Generic	%	Unique	Generic	%	Natural	AI	ET	No.	%
2000	13439	6523	6916	0.94	13391	100%	13340	0	0	99%	13350	0	99%	11716	1566	157	77	49%
2001	13514	6688	6826	0.98	13477	100%	13385	0	0	99%	13465	0	100%	11715	1596	203	171	84%
2002	13481	6643	6838	0.97	13471	100%	13408	0	0	99%	13449	0	100%	11650	1559	272	170	63%
2003	13576	6831	6745	1.01	13561	100%	13454	0	0	99%	13532	0	100%	11855	1518	203	151	74%
2004	13500	6654	6846	0.97	13470	100%	13388	0	0	99%	13452	0	100%	11707	1565	228	185	81%
2005	14135	7113	7022	1.01	14131	100%	14083	0	0	100%	14125	0	100%	12232	1638	265	237	89%
2006	14420	7256	7164	1.01	14420	100%	14381	0	0	100%	14408	0	100%	12664	1510	246	223	91%
2007	14296	7120	7176	0.99	14296	100%	14225	0	0	100%	14285	0	100%	12508	1642	146	114	78%
2008	13373	6696	6677	1.00	13372	100%	13338	0	0	100%	13366	0	100%	11861	1356	156	120	77%
2009	13747	6846	6901	0.99	13747	100%	13696	0	0	100%	13747	0	100%	12287	1405	55	39	71%
2010	13539	6752	6787	0.99	13539	100%	13497	0	0	100%	13534	0	100%	12208	1303	28	23	82%
2011	12837	6424	6413	1.00	12837	100%	12807	0	0	100%	12833	0	100%	11721	1092	24	21	88%
2012	13467	6701	6766	0.99	13467	100%	13441	0	0	100%	13464	0	100%	12047	1389	31	21	68%
2013	12967	6589	6378	1.03	12967	100%	12898	0	0	99%	12951	0	100%	11636	1308	23	10	43%
2014	89	56	33	1.70	89	100%	89	0	0	100%	89	0	100%	62	27	0	0	-

ALL HERDS Completeness of Performance Birth and Fertility

Calving Year	Sex	Animals	Calving Ease		Birth Weight		AI Date		Scrotal Size		Days to Calving	
			No.	%	No.	%	No.	%	No.	%	No.	%
2000	F	6916	4267	62%	4120	60%	627	77%			7100	53%
2000	M	6523	4118	63%	4053	62%	591	78%	740	11%		
2001	F	6826	4943	72%	4245	62%	583	78%			6277	47%
2001	M	6688	4972	74%	4405	66%	683	80%	857	13%		
2002	F	6838	5001	73%	4581	67%	694	87%			6659	50%
2002	M	6643	4899	74%	4635	70%	654	86%	1149	17%		
2003	F	6745	4788	71%	4674	69%	629	87%			6983	52%
2003	M	6831	4877	71%	4852	71%	714	90%	1511	22%		
2004	F	6846	5468	80%	4985	73%	629	83%			6098	46%
2004	M	6654	5334	80%	5107	77%	728	90%	1637	25%		
2005	F	7022	5650	80%	5482	78%	749	95%			6724	48%
2005	M	7113	5692	80%	5557	78%	801	94%	1833	26%		
2006	F	7164	6097	85%	5457	76%	668	91%			7146	50%
2006	M	7256	6202	85%	5671	78%	720	93%	1868	26%		
2007	F	7176	6083	85%	5755	80%	779	96%			7245	51%
2007	M	7120	5969	84%	5752	81%	792	95%	2010	28%		
2008	F	6677	5767	86%	5384	81%	612	93%			7220	55%
2008	M	6696	5872	88%	5432	81%	665	95%	1837	27%		
2009	F	6901	6106	88%	5638	82%	665	94%			6664	49%
2009	M	6846	6064	89%	5656	83%	645	93%	1843	27%		
2010	F	6787	6092	90%	5671	84%	598	94%			3952	29%
2010	M	6752	6042	89%	5715	85%	631	94%	1861	28%		
2011	F	6413	5753	90%	5402	84%	516	91%			969	8%
2011	M	6424	5737	89%	5386	84%	478	91%	1698	26%		
2012	F	6766	6312	93%	5748	85%	643	93%			215	2%
2012	M	6701	6275	94%	5637	84%	638	92%	1898	28%		
2013	F	6378	6036	95%	5572	87%	590	96%			0	0%
2013	M	6589	6195	94%	5801	88%	672	97%	37	1%		
2014	F	33	27	82%	26	79%	8	100%			0	0%
2014	M	56	48	86%	46	82%	19	100%	0	0%		

**ALL HERDS
Completeness of Performance
Weight**

Calving Year	Sex	Animals	200 Day Wt			400 Day Wt			600 Day Wt			Mature Cow Weight	
			1st	2nd	%	1st	2nd	%	1st	2nd	%	No.	%
2000	F	6916	5624	146	81%	3417	421	49%	2093	29	30%	7	0%
2000	M	6523	5330	254	82%	3644	575	56%	2070	161	32%		
2001	F	6826	5293	308	78%	3208	325	47%	2067	94	30%	133	1%
2001	M	6688	5246	306	78%	3717	738	56%	2036	102	30%		
2002	F	6838	5345	455	78%	3612	373	53%	2323	89	34%	201	2%
2002	M	6643	5253	459	79%	3736	783	56%	2148	242	32%		
2003	F	6745	5505	294	82%	3330	475	49%	1827	109	27%	251	2%
2003	M	6831	5678	285	83%	3965	682	58%	1881	161	28%		
2004	F	6846	5248	131	77%	3751	529	55%	2487	50	36%	931	7%
2004	M	6654	5320	247	80%	3982	999	60%	2038	100	31%		
2005	F	7022	5403	194	77%	3884	460	55%	2403	70	34%	2662	19%
2005	M	7113	5679	254	80%	4207	703	59%	2132	159	30%		
2006	F	7164	5654	207	79%	3489	445	49%	2179	113	30%	2962	21%
2006	M	7256	5808	356	80%	4146	588	57%	1878	138	26%		
2007	F	7176	5533	269	77%	3735	554	52%	2579	178	36%	1649	12%
2007	M	7120	5455	367	77%	3785	954	53%	1730	97	24%		
2008	F	6677	5041	516	76%	3562	534	53%	1947	124	29%	1809	14%
2008	M	6696	5110	548	76%	3669	661	55%	1355	122	20%		
2009	F	6901	5497	353	80%	3138	402	45%	2083	72	30%	2103	15%
2009	M	6846	5466	380	80%	3427	836	50%	1440	79	21%		
2010	F	6787	4963	161	73%	3522	757	52%	2318	112	34%	1529	11%
2010	M	6752	4932	627	73%	3584	910	53%	1484	140	22%		
2011	F	6413	5015	472	78%	3310	409	52%	1802	99	28%	1666	13%
2011	M	6424	4949	645	77%	3266	640	51%	1336	119	21%		
2012	F	6766	5402	235	80%	3151	545	47%	2195	32	32%	1986	15%
2012	M	6701	5375	277	80%	3467	605	52%	1274	83	19%		
2013	F	6378	4574	279	72%	50	15	1%	0	0	0%	1535	12%
2013	M	6589	4907	255	74%	185	0	3%	16	0	0%		
2014	F	33	15	0	45%	0	0	0%	0	0	0%	1936	100%
2014	M	56	30	0	54%	0	0	0%	0	0	0%		

**ALL HERDS
Completeness of Performance
Carcase**

Calving Year	Sex	Animals	Scan EMA		Scan Rib Fat		Scan Rump Fat		Scan IMF		Abattoir
			No.	%	No.	%	No.	%	No.	%	
2000	F	6916	827	12%	827	12%	827	12%	385	6%	0
2000	M	6523	1656	25%	1656	25%	1656	25%	353	5%	0
2001	F	6826	988	14%	989	14%	988	14%	482	7%	0
2001	M	6688	1686	25%	1686	25%	1684	25%	548	8%	0
2002	F	6838	1060	16%	1048	15%	1048	15%	594	9%	0
2002	M	6643	1871	28%	1849	28%	1849	28%	717	11%	0
2003	F	6745	1104	16%	1106	16%	1106	16%	628	9%	0
2003	M	6831	2033	30%	2037	30%	2035	30%	857	13%	0
2004	F	6846	1364	20%	1364	20%	1364	20%	824	12%	0
2004	M	6654	2087	31%	2088	31%	2088	31%	954	14%	0
2005	F	7022	1230	18%	1230	18%	1230	18%	713	10%	0
2005	M	7113	2023	28%	2023	28%	2024	28%	788	11%	0
2006	F	7164	1011	14%	1011	14%	1011	14%	484	7%	0
2006	M	7256	2045	28%	2043	28%	2044	28%	618	9%	0
2007	F	7176	1211	17%	1210	17%	1212	17%	489	7%	0
2007	M	7120	2025	28%	2026	28%	2026	28%	624	9%	0
2008	F	6677	1166	17%	1166	17%	1166	17%	479	7%	0
2008	M	6696	1894	28%	1894	28%	1894	28%	503	8%	0
2009	F	6901	1125	16%	1126	16%	1125	16%	522	8%	0
2009	M	6846	1958	29%	1960	29%	1958	29%	782	11%	0
2010	F	6787	1402	21%	1401	21%	1401	21%	961	14%	0
2010	M	6752	1916	28%	1915	28%	1919	28%	1212	18%	0
2011	F	6413	1550	24%	1550	24%	1548	24%	1259	20%	0
2011	M	6424	1901	30%	1900	30%	1902	30%	1347	21%	0
2012	F	6766	1678	25%	1676	25%	1676	25%	1383	20%	0
2012	M	6701	2095	31%	2098	31%	2099	31%	1662	25%	0
2013	F	6378	9	0%	9	0%	9	0%	9	0%	0
2013	M	6589	159	2%	159	2%	159	2%	157	2%	0
2014	F	33	0	0%	0	0%	0	0%	0	0%	0
2014	M	56	0	0%	0	0%	0	0%	0	0%	0

2014 NZHA Bull Sale Results

To view results submitted by breeders go to: www.herefords.co.nz





Forge a new path.

The all new Honda 2014 Rancher Range.



RANCHER

TRX420 RANGE

FOREMAN

TRX500 RANGE

www.hondamotorbikes.co.nz

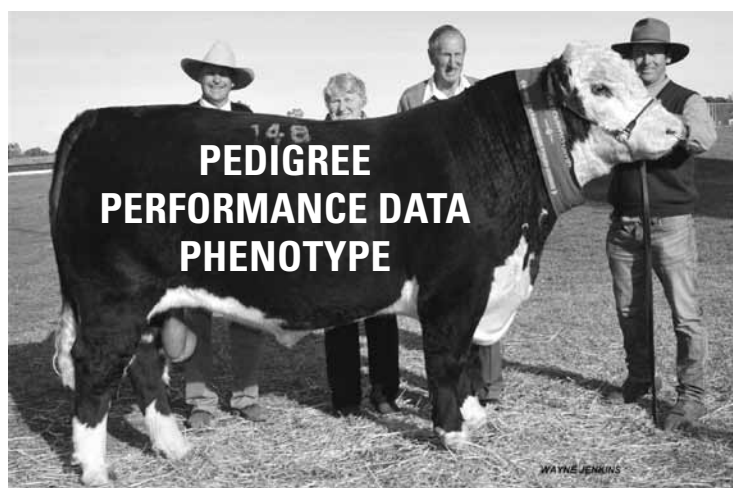
Available while stocks last. At participating Honda dealers only. Specifications may not apply to all models. Contact your local Honda Dealer for more information.

For your information . . .

July 2014 Hereford GROUP BREEDPLAN - Percentile Bands for all 2012 born animals

Use this table as a guide to compare individual animals with the current genetic level of the breed

	Calv-Ease		Birth		Growth				Fert		Carcase					Indexes					
	Dir	Dtrs	GL	Bwt	200	400	600	Mwt	Milk	SS	DC	Cwt	EMA	Rib	P8	RBY	IMF	HP	EM	DM	DT
	%	%	days		kg					cm	days	kg	sq.cm	mm		%		\$			
High 1%	+8.4	+6.3	-3.7	-0.5	+41	+68	+99	+99	+22	+3.5	-5.6	+65	+6.0	+1.7	+2.6	+2.2	+1.4	+120	+122	+134	+81
High 5%	+5.8	+4.6	-2.2	+1.1	+37	+61	+88	+87	+19	+2.7	-4.5	+57	+4.6	+1.2	+1.7	+1.7	+0.9	+108	+111	+113	+72
High 10%	+4.3	+3.7	-1.5	+2.0	+35	+57	+83	+82	+18	+2.4	-3.9	+53	+4.1	+0.9	+1.3	+1.5	+0.7	+101	+105	+103	+66
High 15%	+3.3	+3.1	-1.2	+2.5	+34	+55	+79	+78	+17	+2.2	-3.5	+50	+3.8	+0.8	+1.1	+1.3	+0.5	+97	+101	+96	+63
High 20%	+2.5	+2.6	-0.9	+2.9	+33	+53	+76	+75	+16	+2.1	-3.2	+48	+3.6	+0.6	+0.9	+1.2	+0.4	+93	+98	+91	+60
High 25%	+1.9	+2.2	-0.7	+3.3	+32	+51	+74	+72	+15	+1.9	-2.9	+47	+3.4	+0.6	+0.8	+1.1	+0.4	+90	+95	+86	+57
High 30%	+1.3	+1.9	-0.5	+3.6	+31	+50	+72	+70	+15	+1.8	-2.6	+45	+3.2	+0.5	+0.6	+1.0	+0.3	+87	+92	+81	+55
High 35%	+0.8	+1.6	-0.3	+3.8	+30	+49	+70	+68	+14	+1.7	-2.4	+44	+3.0	+0.4	+0.5	+0.9	+0.2	+84	+90	+77	+53
High 40%	+0.4	+1.3	-0.1	+4.1	+30	+48	+68	+66	+14	+1.6	-2.2	+43	+2.9	+0.3	+0.4	+0.9	+0.2	+81	+87	+73	+51
High 45%	-0.1	+1.1	+0.0	+4.3	+29	+46	+67	+64	+13	+1.6	-2.0	+41	+2.8	+0.3	+0.3	+0.8	+0.1	+79	+85	+70	+49
50%	-0.4	+0.8	+0.1	+4.5	+28	+45	+65	+62	+13	+1.5	-1.8	+40	+2.7	+0.2	+0.2	+0.7	+0.1	+76	+82	+66	+47
Low 45%	-0.8	+0.6	+0.3	+4.7	+28	+44	+63	+60	+12	+1.4	-1.6	+39	+2.5	+0.1	+0.1	+0.7	+0.1	+74	+80	+63	+45
Low 40%	-1.2	+0.4	+0.4	+4.9	+27	+43	+61	+58	+12	+1.3	-1.5	+38	+2.4	+0.1	+0.0	+0.6	+0.0	+71	+78	+60	+43
Low 35%	-1.6	+0.1	+0.6	+5.1	+26	+42	+60	+56	+11	+1.2	-1.3	+36	+2.3	+0.0	-0.1	+0.5	+0.0	+69	+75	+56	+41
Low 30%	-2.0	-0.1	+0.7	+5.3	+25	+41	+58	+54	+11	+1.2	-1.1	+35	+2.2	+0.0	-0.2	+0.5	-0.1	+67	+73	+53	+39
Low 25%	-2.4	-0.4	+0.9	+5.5	+24	+39	+56	+52	+10	+1.1	-1.0	+33	+2.1	-0.1	-0.3	+0.4	-0.1	+64	+70	+49	+37
Low 20%	-3.0	-0.7	+1.1	+5.8	+23	+38	+53	+49	+10	+1.0	-0.8	+32	+1.9	-0.2	-0.4	+0.3	-0.2	+61	+67	+44	+34
Low 15%	-3.6	-1.0	+1.3	+6.0	+22	+36	+50	+46	+9	+0.8	-0.6	+30	+1.8	-0.3	-0.6	+0.2	-0.2	+58	+63	+39	+32
Low 10%	-4.4	-1.5	+1.6	+6.4	+21	+33	+47	+42	+8	+0.7	-0.3	+27	+1.6	-0.4	-0.8	+0.1	-0.3	+53	+59	+33	+28
Low 5%	-5.9	-2.2	+2.1	+6.9	+19	+30	+41	+35	+6	+0.4	+0.1	+24	+1.3	-0.6	-1.1	-0.1	-0.5	+47	+53	+25	+23
Low 1%	-8.9	-3.7	+3.0	+8.0	+13	+21	+29	+21	+3	+0.0	+0.8	+16	+0.8	-1.0	-1.8	-0.6	-0.8	+36	+43	+5	+12



CALIBRE G74

SPRING SPECIAL

Semen now available min package

10 straws \$70/straw.

Semen package of 20 or more straws

\$60/straw

PACKAGES AVAILABLE -

50 straws @ \$50.00 /straw + GST

Australian Poll Hereford National Senior & Grand Champion Bull 2013

Purchased By Bowen & Melville Studs- record price \$90,000

JULY 2014 HEREFORD GROUP BREEDPLAN

DIR	DTRS	GL	BIRTH	200	400	600	MCW	MILK	Mat V	SS	DC	CAR	EMA	RIB	RUMP	RBY	IMF
-1.7	+3.8	-0.6	+5.3	+39	+66	+92	+94	+13	+16	+4.2	-4.2	+65	+6.3	+0.5	+0.7	+1.3	+0.4
57%	45%	78%	87%	82%	81%	78%	71%	55%	62%	83%	39%	68%	60%	62%	67%	60%	61%

FOR SEMEN SALES CONTACT:

Stuart Robbie 06 376 6459 otapawa@xtra.co.nz or

Bowen Pastoral Company Stephen & Jodi Peake. 'Bowen' 601 Forest Rd. Barraba 2347 NSW Australia

Email: bowen@northnet.com.au webpage www.bowenstud.com Phone: 61 2 67821756 or 61 427 821756

ANNUAL BOWEN BULL SALE . 3RD THURSDAY IN JULY ANNUALLY



**SILVER
FERN®
FARMS**

**SUPPLYING THE VERY
BEST OF NEW ZEALAND**

Silver Fern Farms' Backbone® Partnerships reward you for enabling your co-operative company to confidently plan forward sales and marketing programmes with key international retail and foodservice customers. Your livestock supply commitment ensures we can deliver exceptional quality product to exacting specifications within market-critical timeframes.

That is how, working together, we will build a world-leading brand.



PREMIER SELECTION



HEREFORD
NEW ZEALAND BEEF

**AGING
GRACEFULLY.**

Silver Fern Farms Premier Selection Hereford New Zealand Beef is marketed proudly on the world stage with a unique promise.

Hereford is an uncommonly fine breed of beef with a hardy constitution that comes from its English roots. Reared in New Zealand's lush pastures, Silver Fern Farms Premier Selection Hereford Beef's broad shouldered muscularity and calm temperament allow it to reach a consistently prime condition. The supremely tender meat that results is full of subtle, yet complex flavours that are concentrated as it ages.

Traditionally subtle yet complex flavours

A breed that exemplifies traditional beef flavour, with the complexity and subtlety of a grass-fed diet.

Calm temperament for consistently prime beef

A naturally tender breed



For more information, or if you would like to join Silver Fern Farms Backbone® Hereford Partnership Programme, please contact:
jason.graham@silverfernfarms.co.nz

**100% MADE OF
NEW ZEALAND**
www.silverfernfarms.com
foodservice.silverfernfarms.co.nz